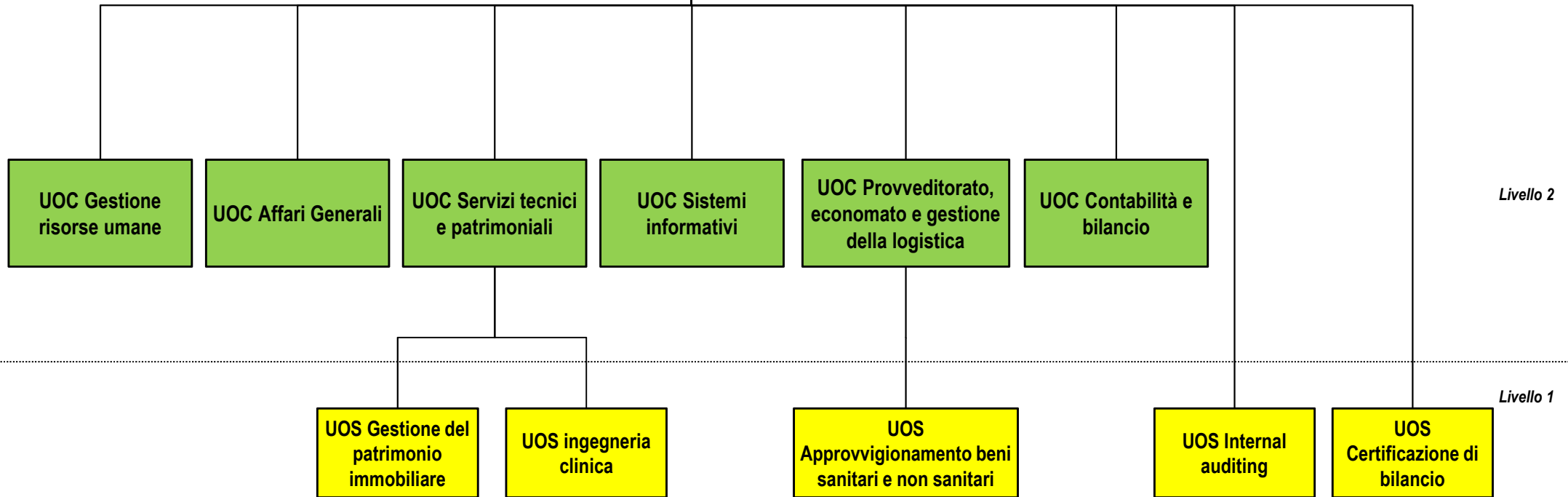
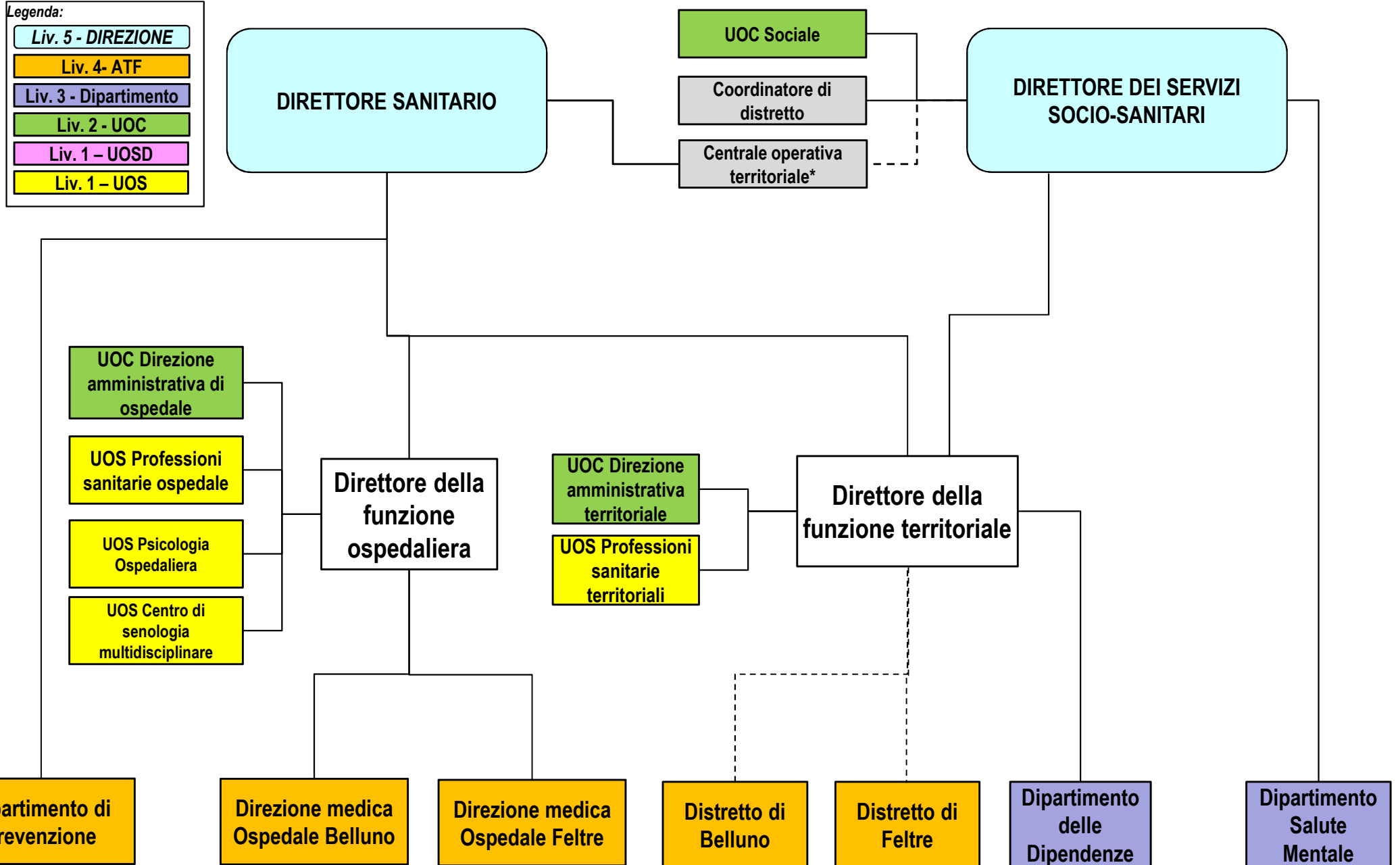


Livello 5

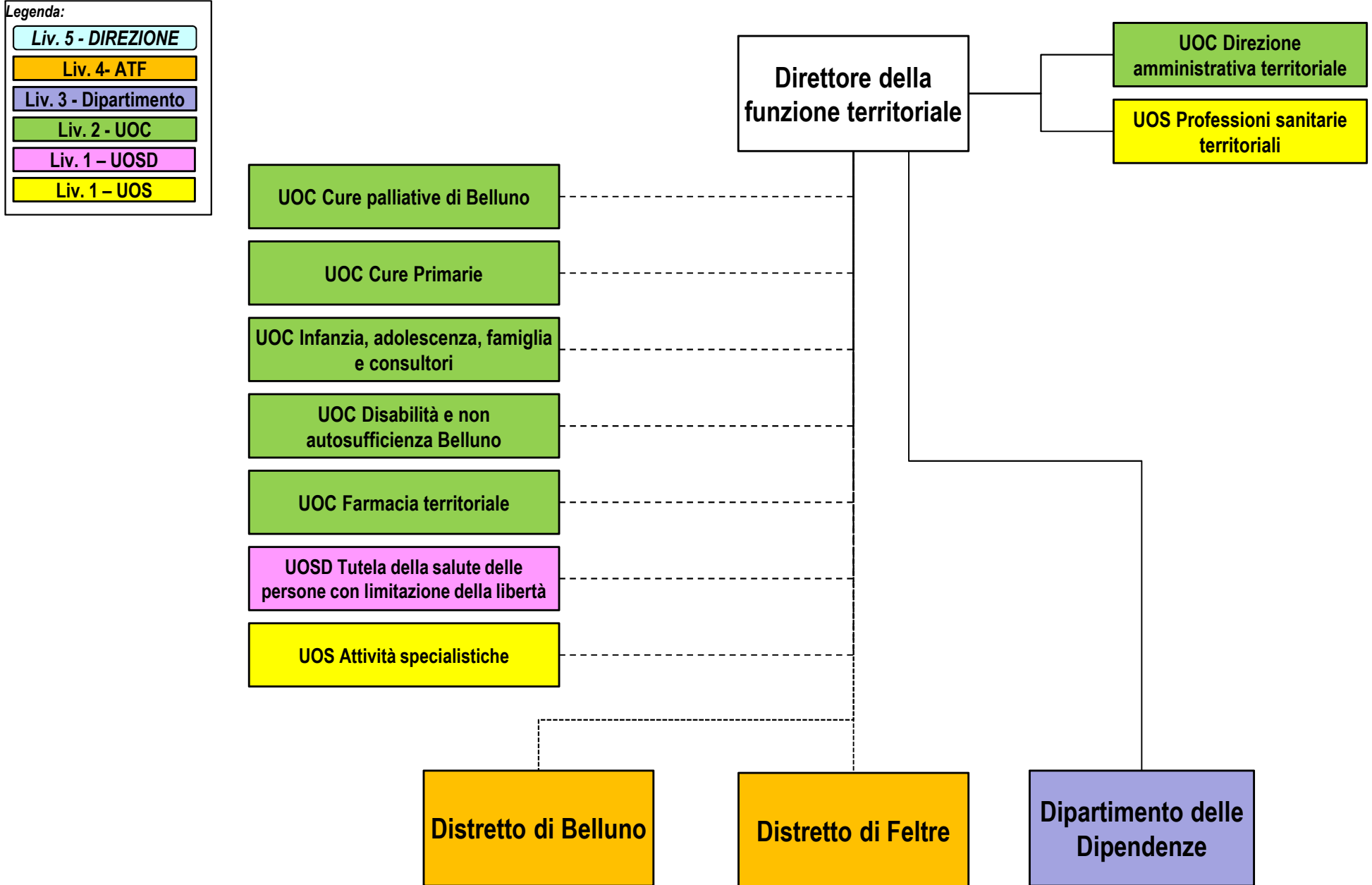


Livello 2

Livello 1

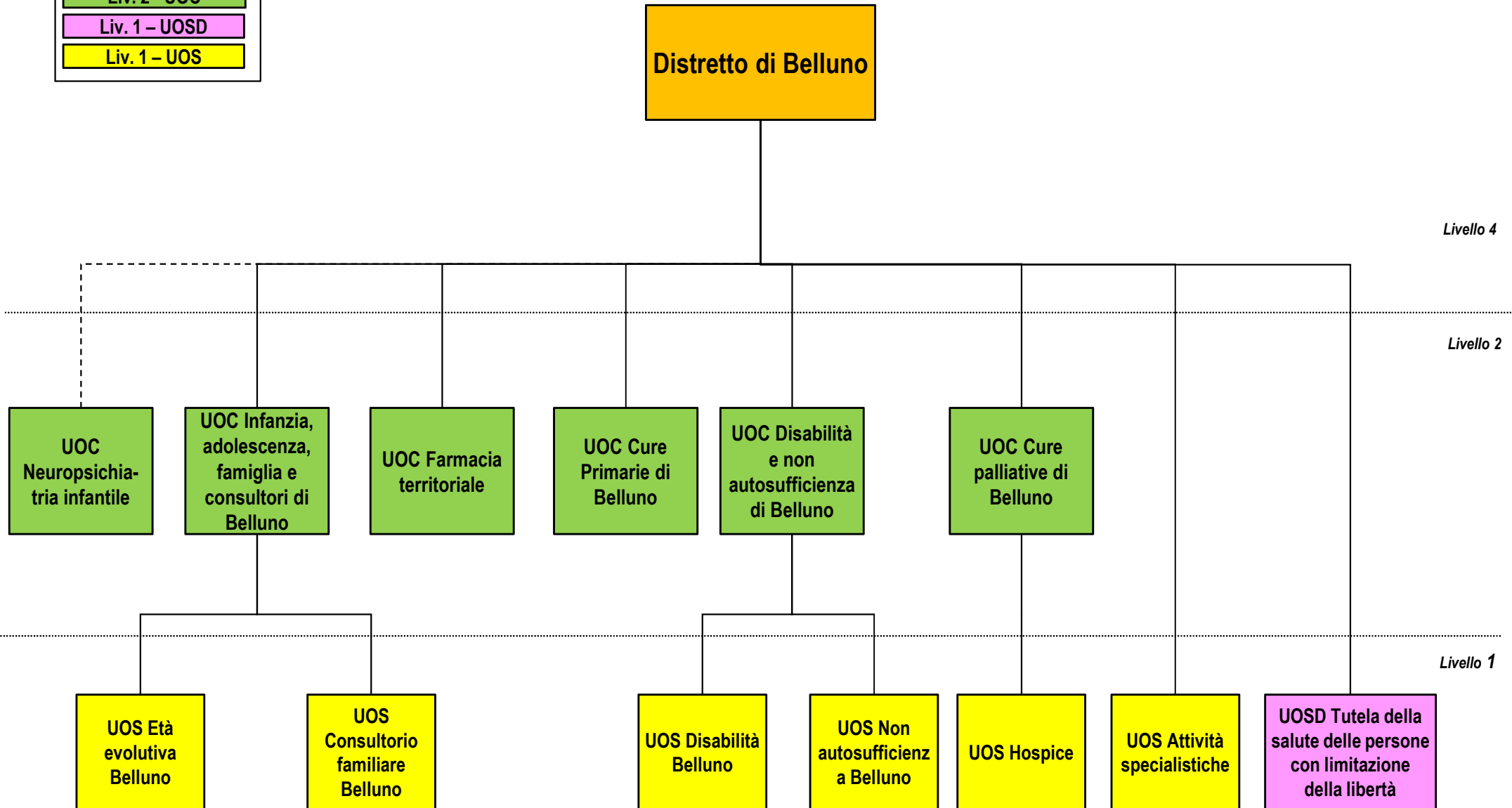
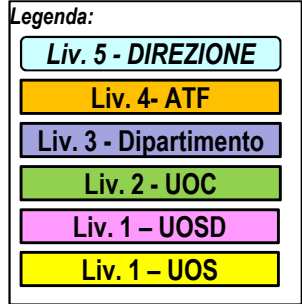


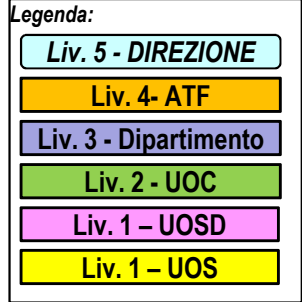
* Funzionalmente collegata al direttore dei servizi socio-sanitari



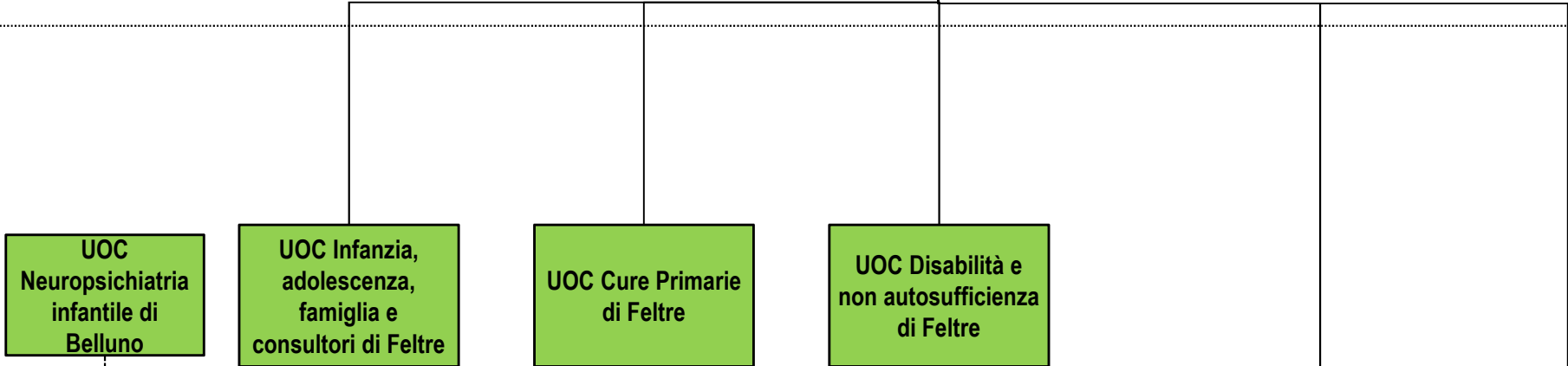
————— Esprime il legame gerarchico tra le UO che hanno una valenza provinciale e il direttore della funzione territoriale.

- - - - - Esprime il legame funzionale tra le UO che hanno funzioni di coordinamento a livello aziendale e il direttore della funzione territoriale.

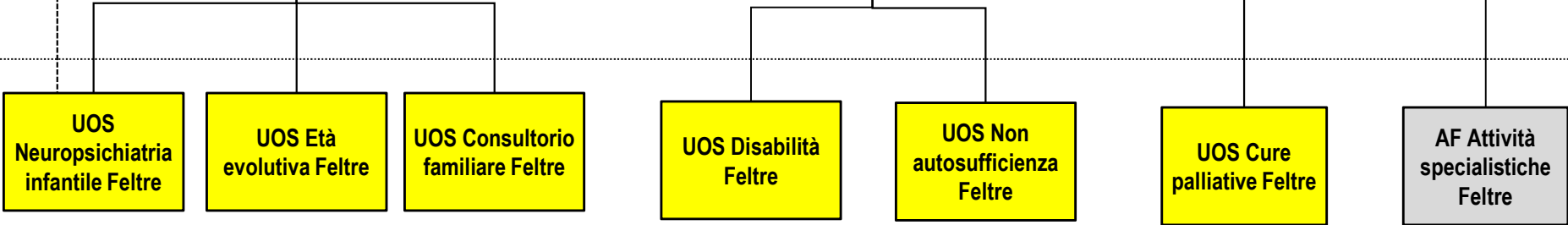




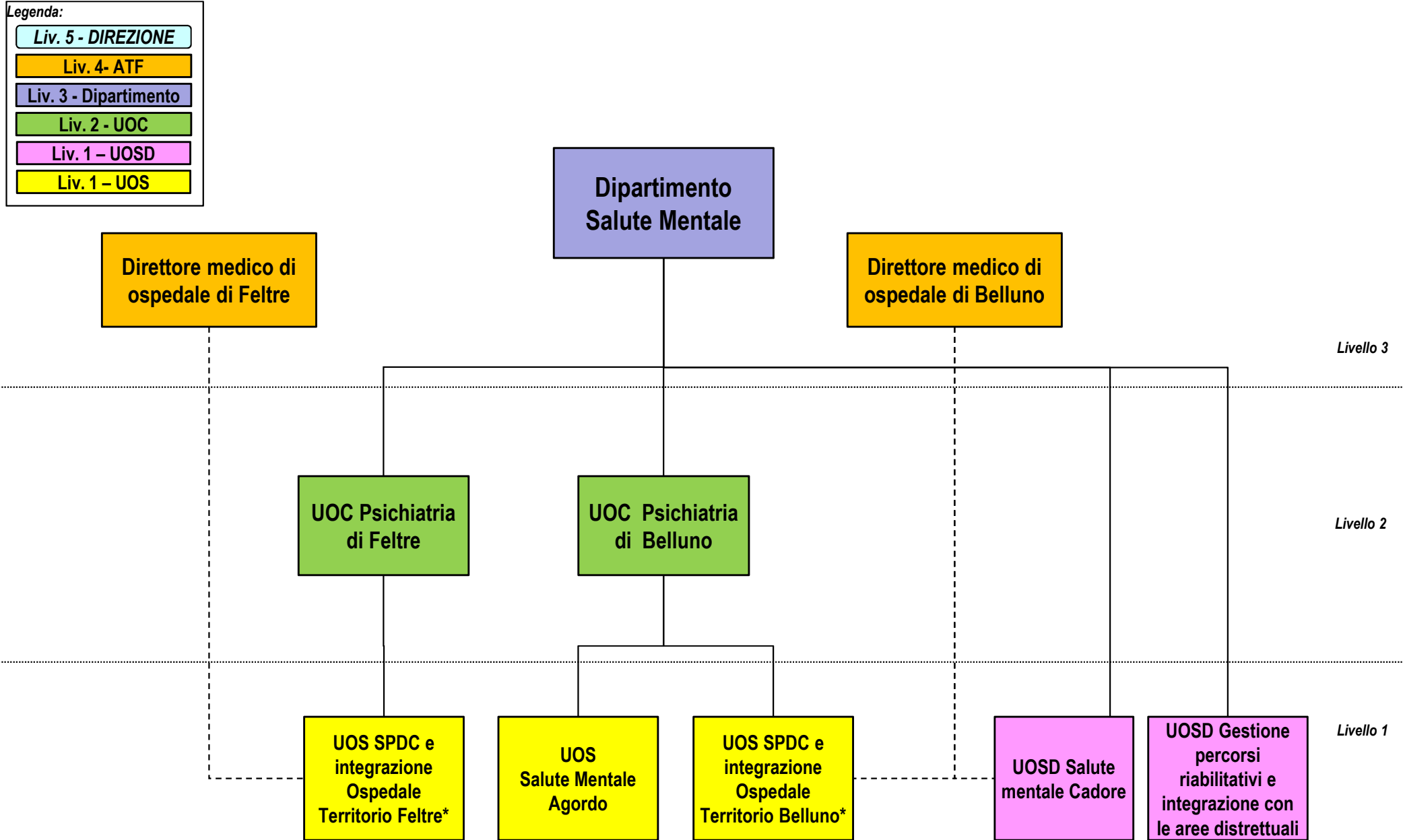
Livello 4



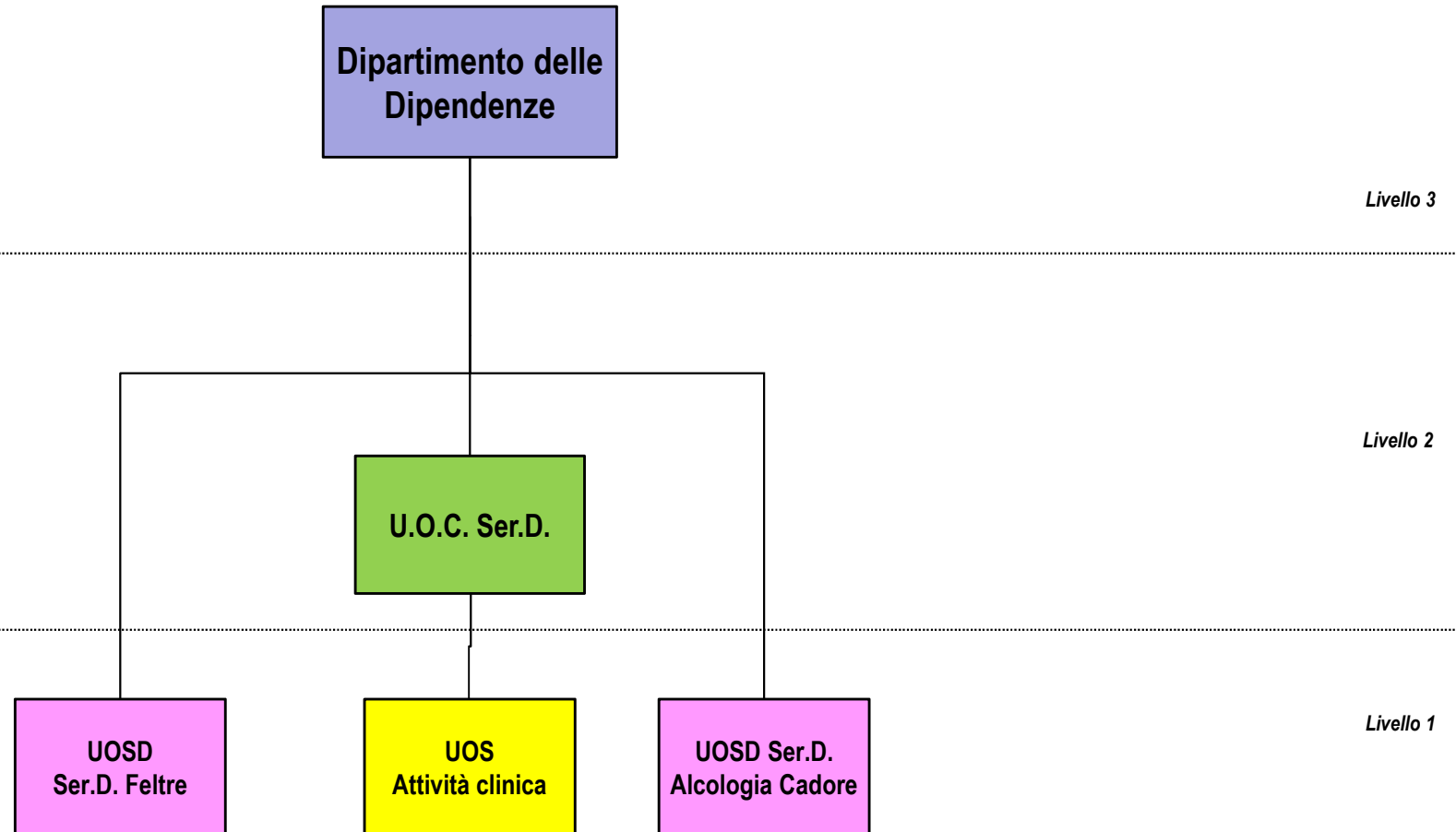
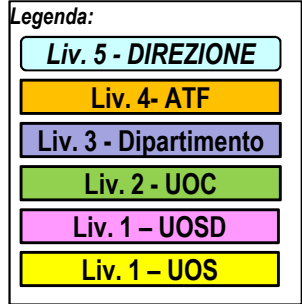
Livello 2

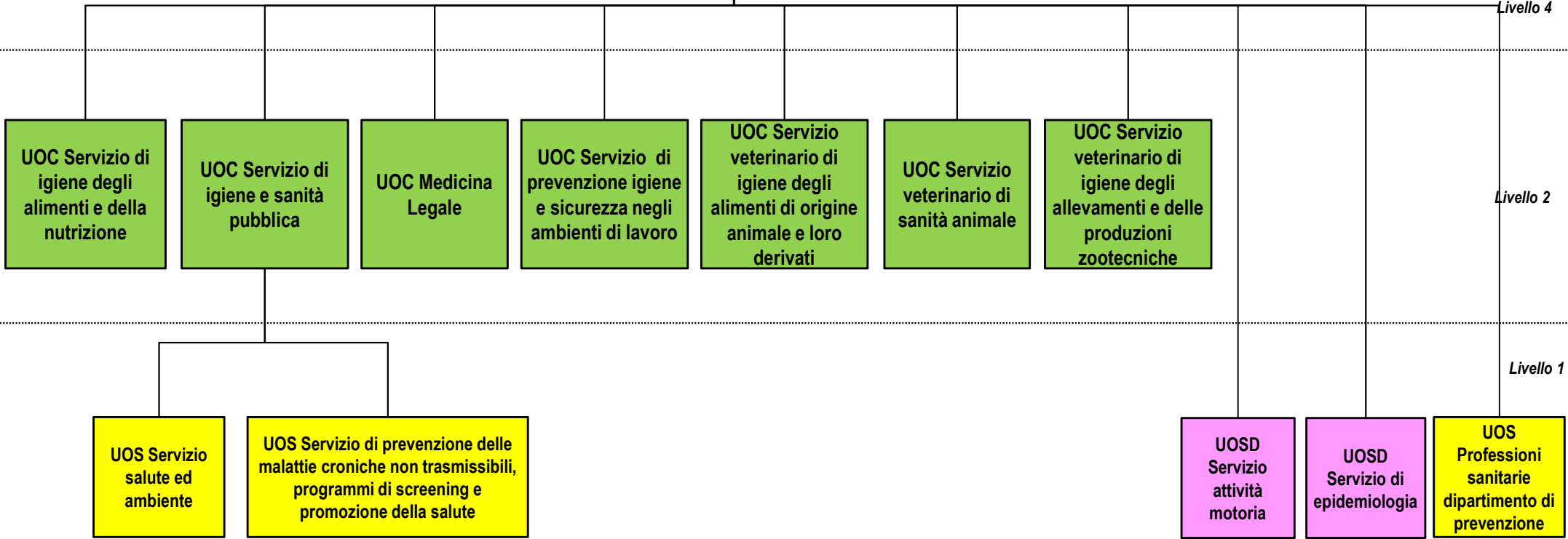
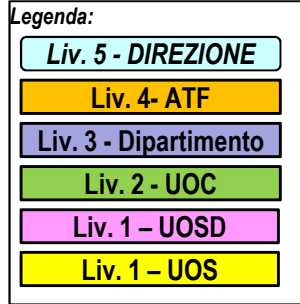


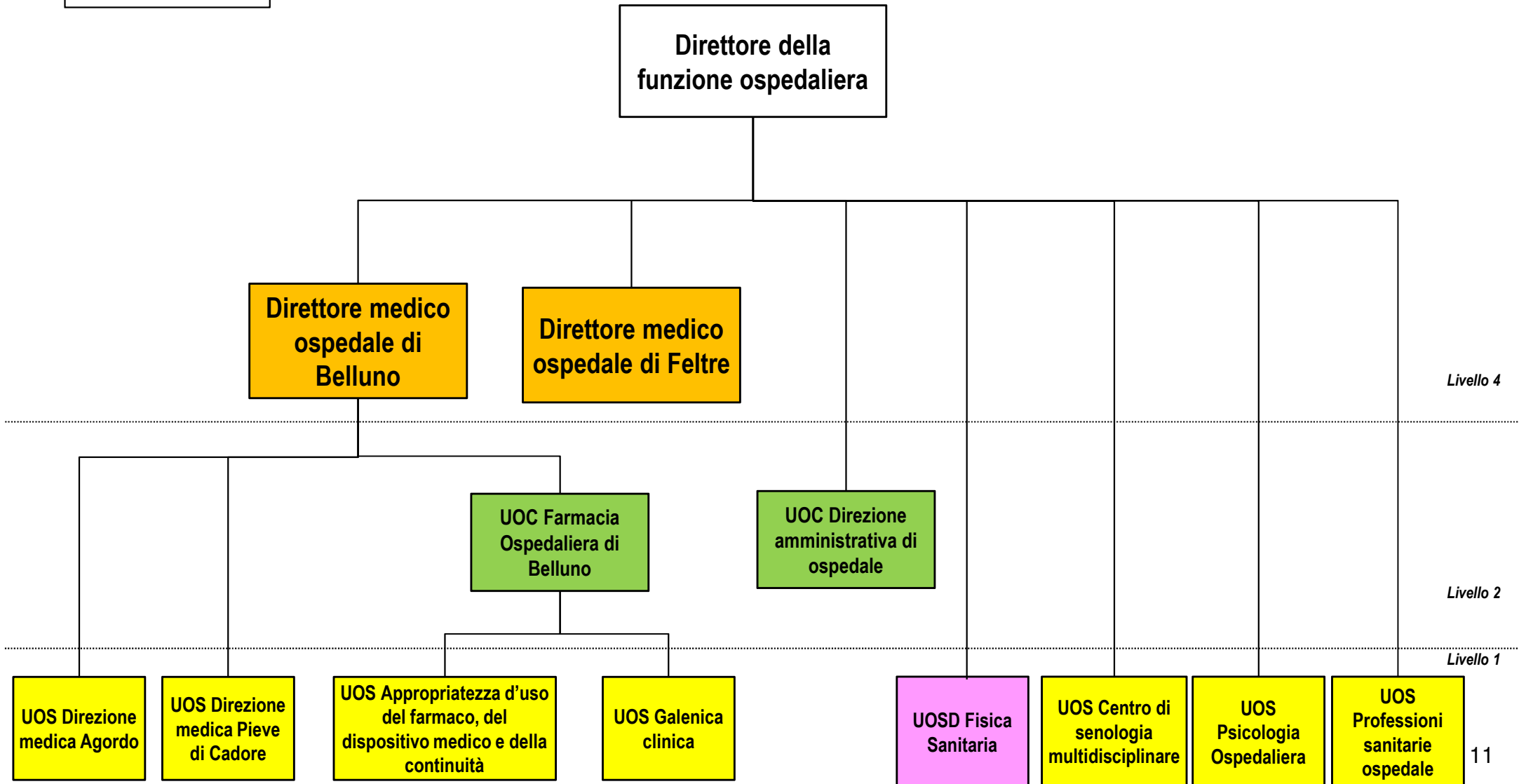
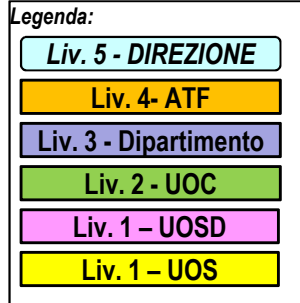
Livello 1

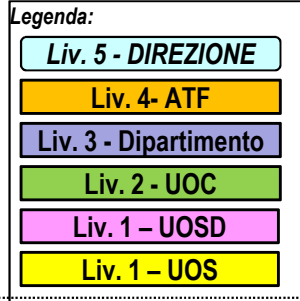


(*) UOS per acuti gerarchicamente dipendente dal DSM, ma collegata funzionalmente alla rispettiva direzione medica di ospedale.









DIRETTORE SANITARIO

Livello 5

Direttore della
funzione ospedaliera

Direttore medico di
ospedale di Belluno

Direttore medico di
ospedale di Feltre

Livello 4

Dipartimento
di area
medica di
Belluno

Dipartimento
di area
chirurgica di
Belluno

Dipartimento
di area
critica di
Belluno

Dipartimento
diagnostico e
di
interventistica
di Belluno

Dipartimento
di area
specialistica
di Belluno

Dipartimento
diagnostico di
laboratorio e
patologia
(TRANSMURALE)

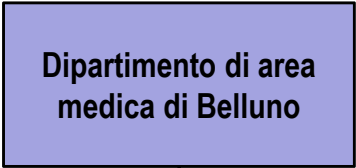
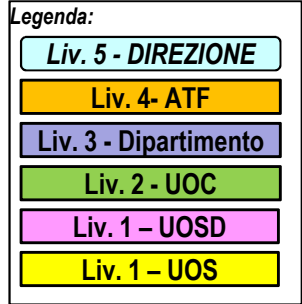
Dipartimento
di area
medica di
Feltre

Dipartimento
di area
chirurgica di
Feltre

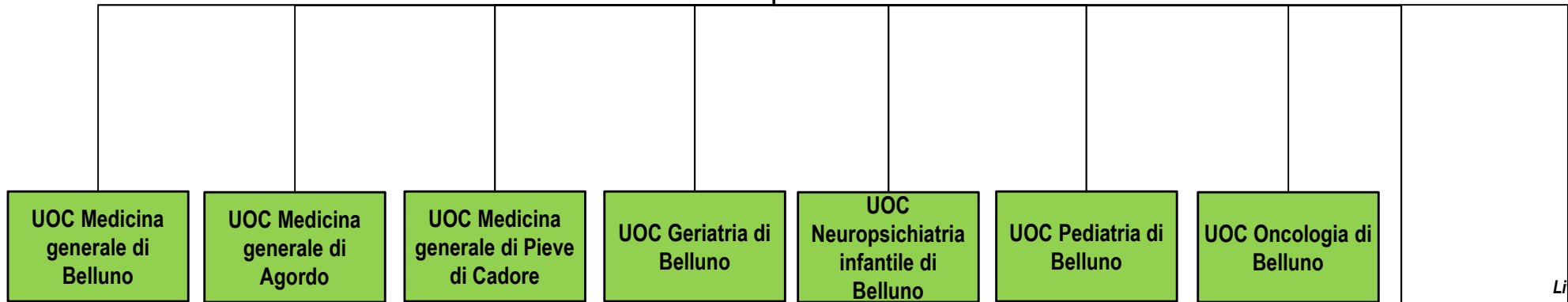
Dipartimento
diagnostico e
dei servizi di
Feltre

Livello 3

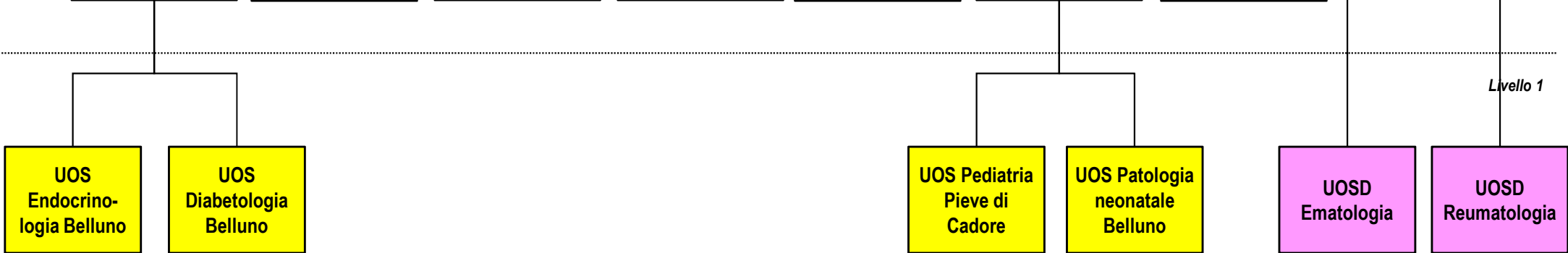
Dipartimenti strutturali Ospedali di Belluno



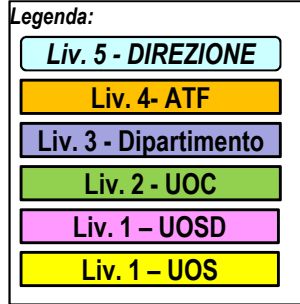
Livello 3



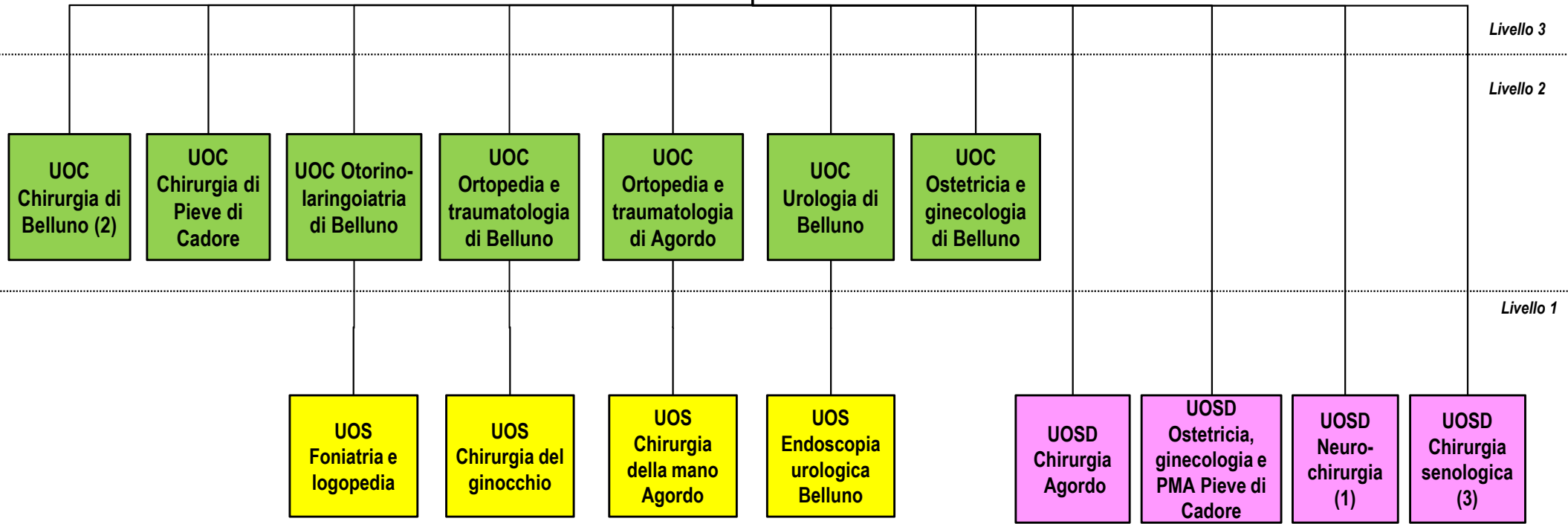
Livello 2



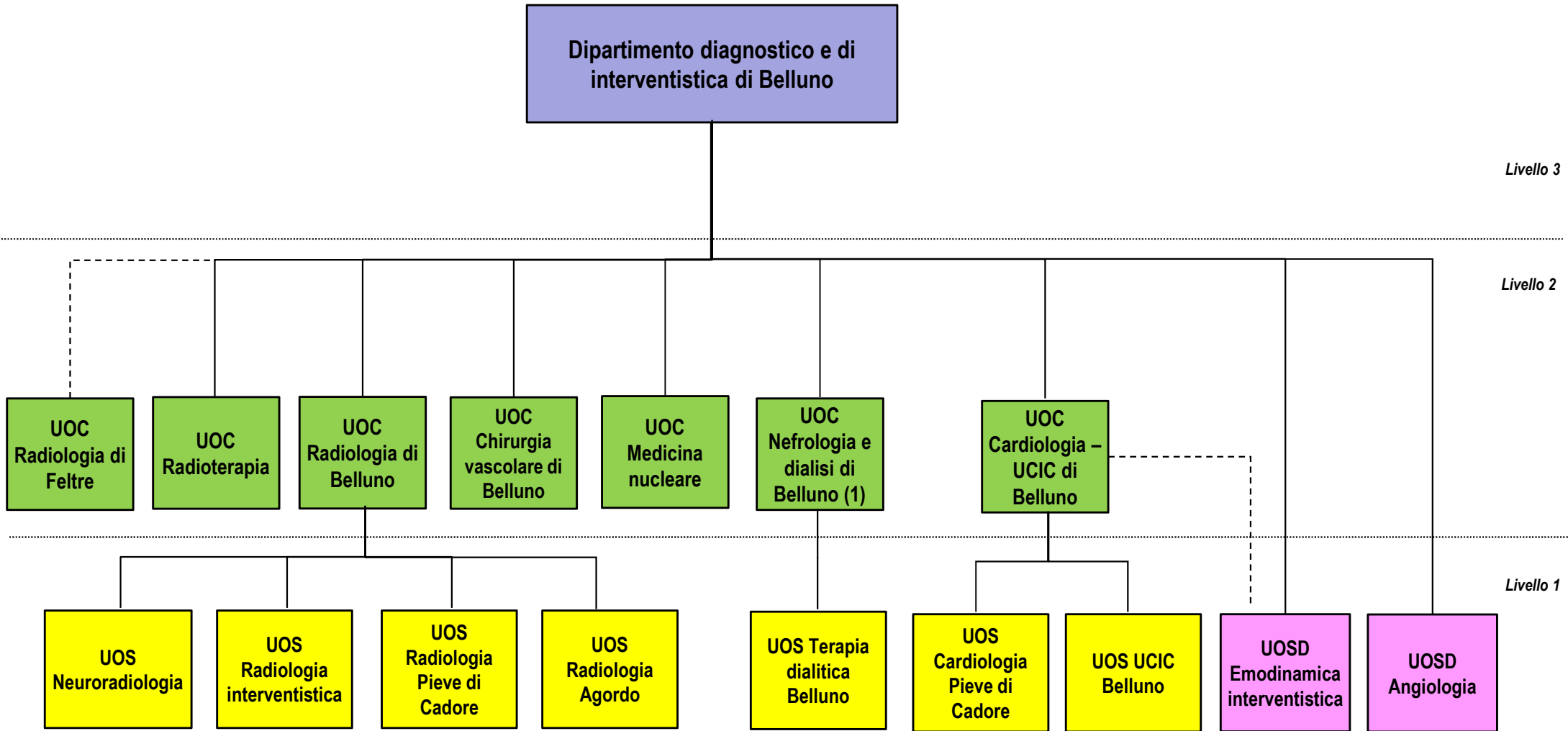
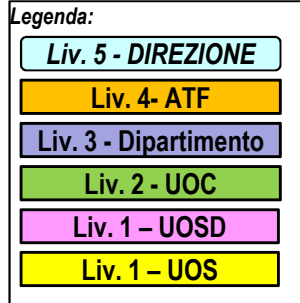
Livello 1



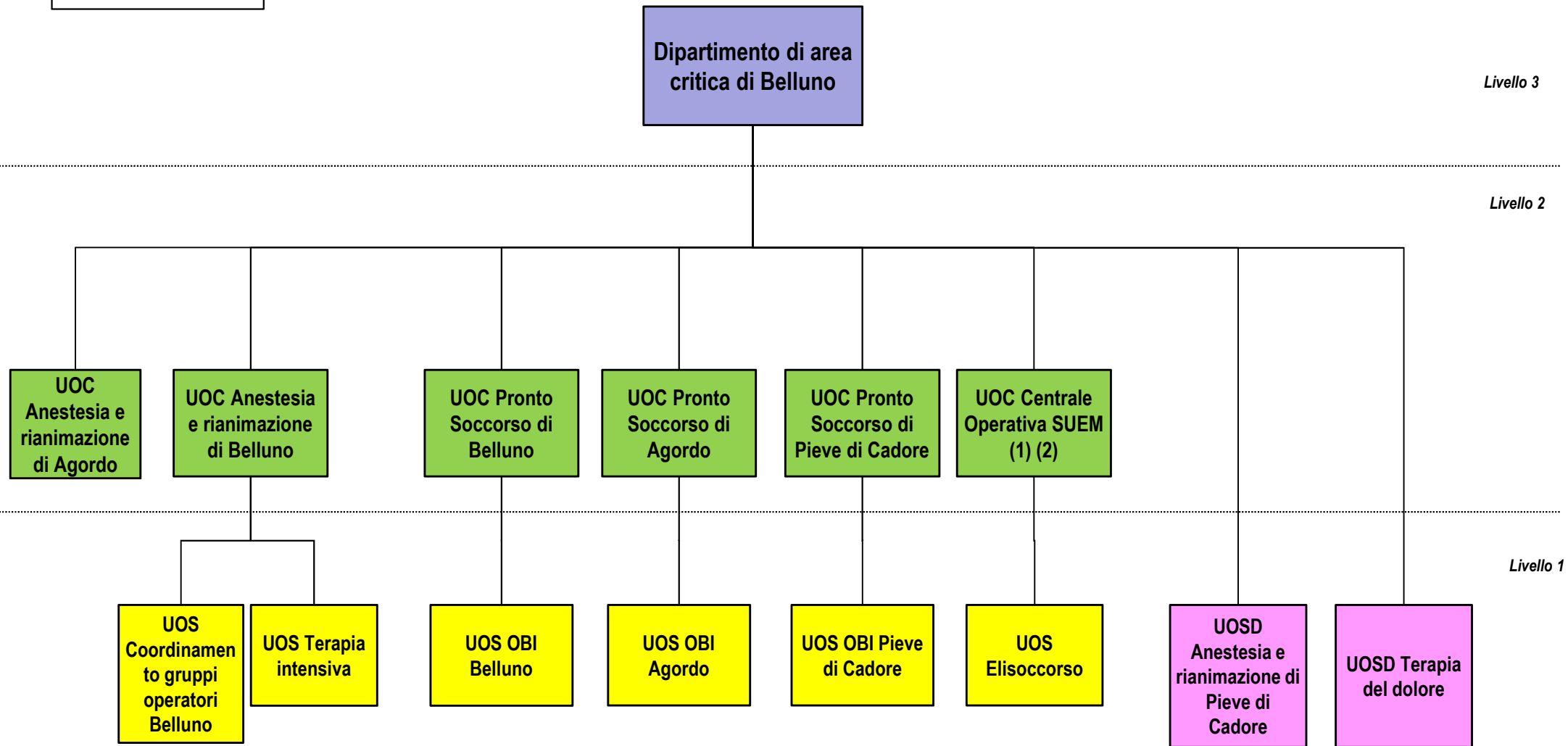
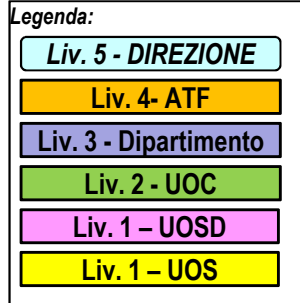
Dipartimento di area chirurgica di Belluno



(1) Attività coordinata e garantita da Treviso
 (2) Vi afferiscono i posti letto di day surgery/week surgery multidisciplinare
 (3) Con Breast Unit

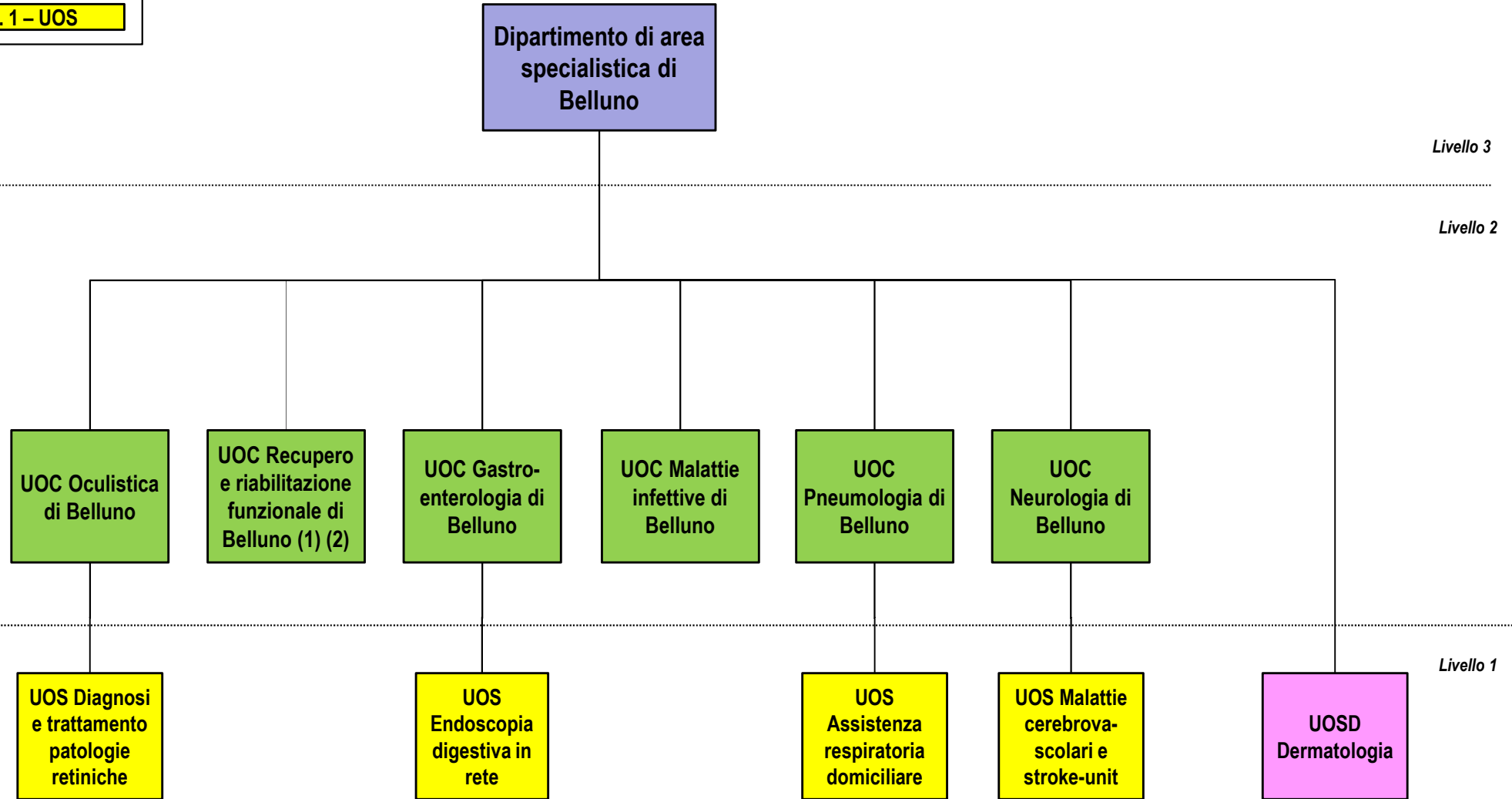
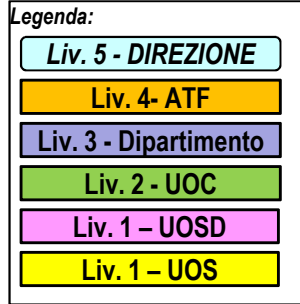


(1) Vi afferiscono i posti letto tecnici di dialisi dell'Ospedale di Agordo



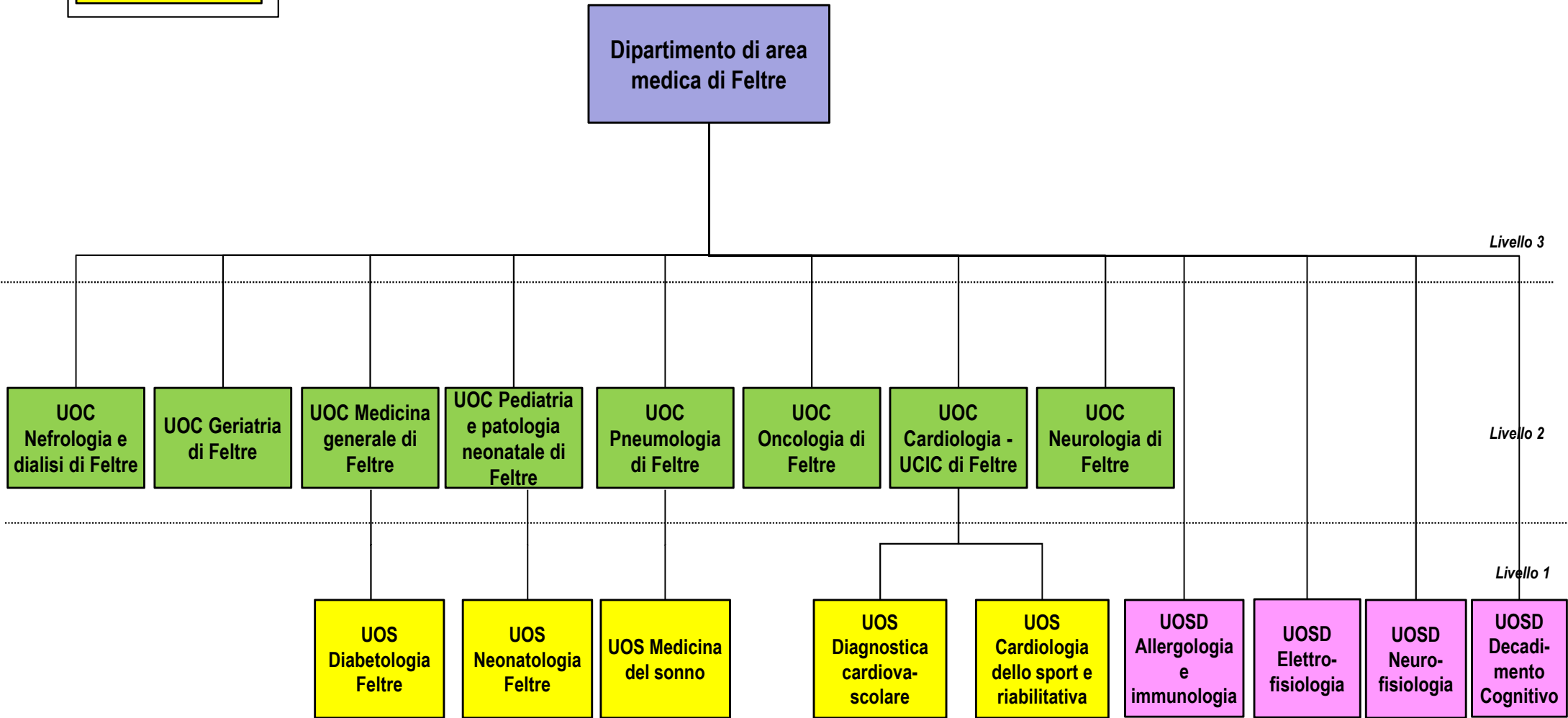
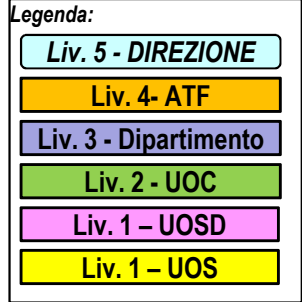
(1) Coordinamento e gestione PPI Auronzo

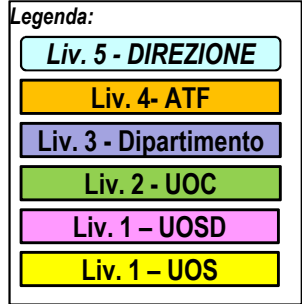
(2) Coordinamento PS Cortina a seguito di concessione dell'ospedale di Cortina



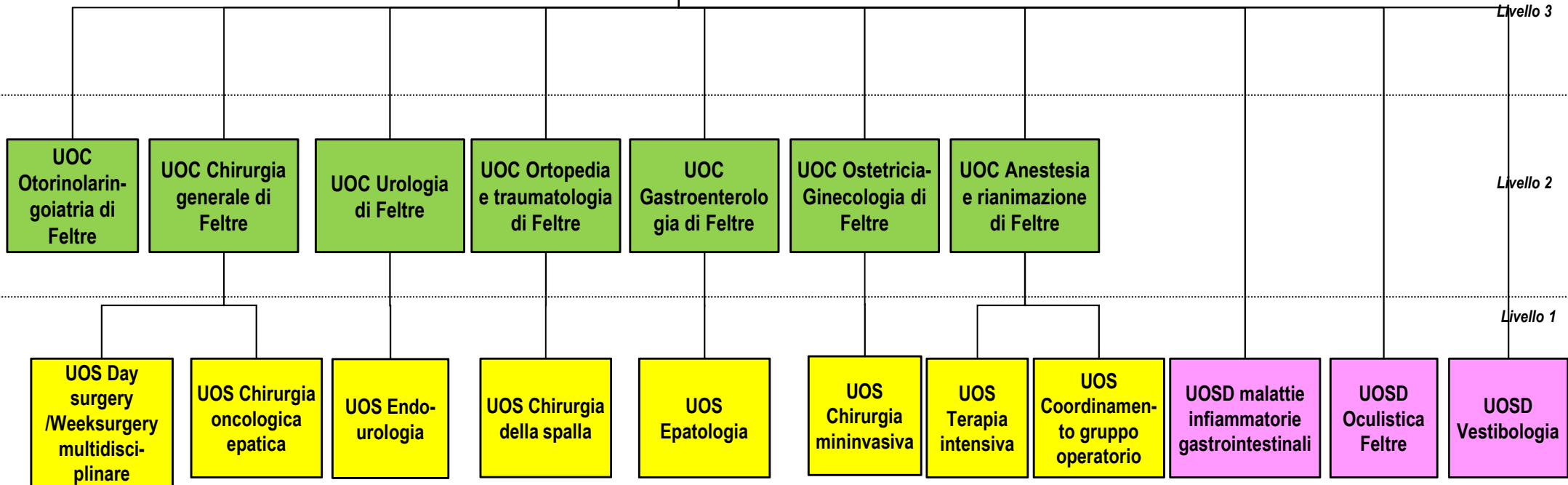
(1) Vi afferiscono i posti letto di RRF con attività di riabilitazione multidisciplinare dell'Ospedale di Agordo
 (2) Vi afferiscono i posti letto di RRF dell'Ospedale di Pieve di Cadore

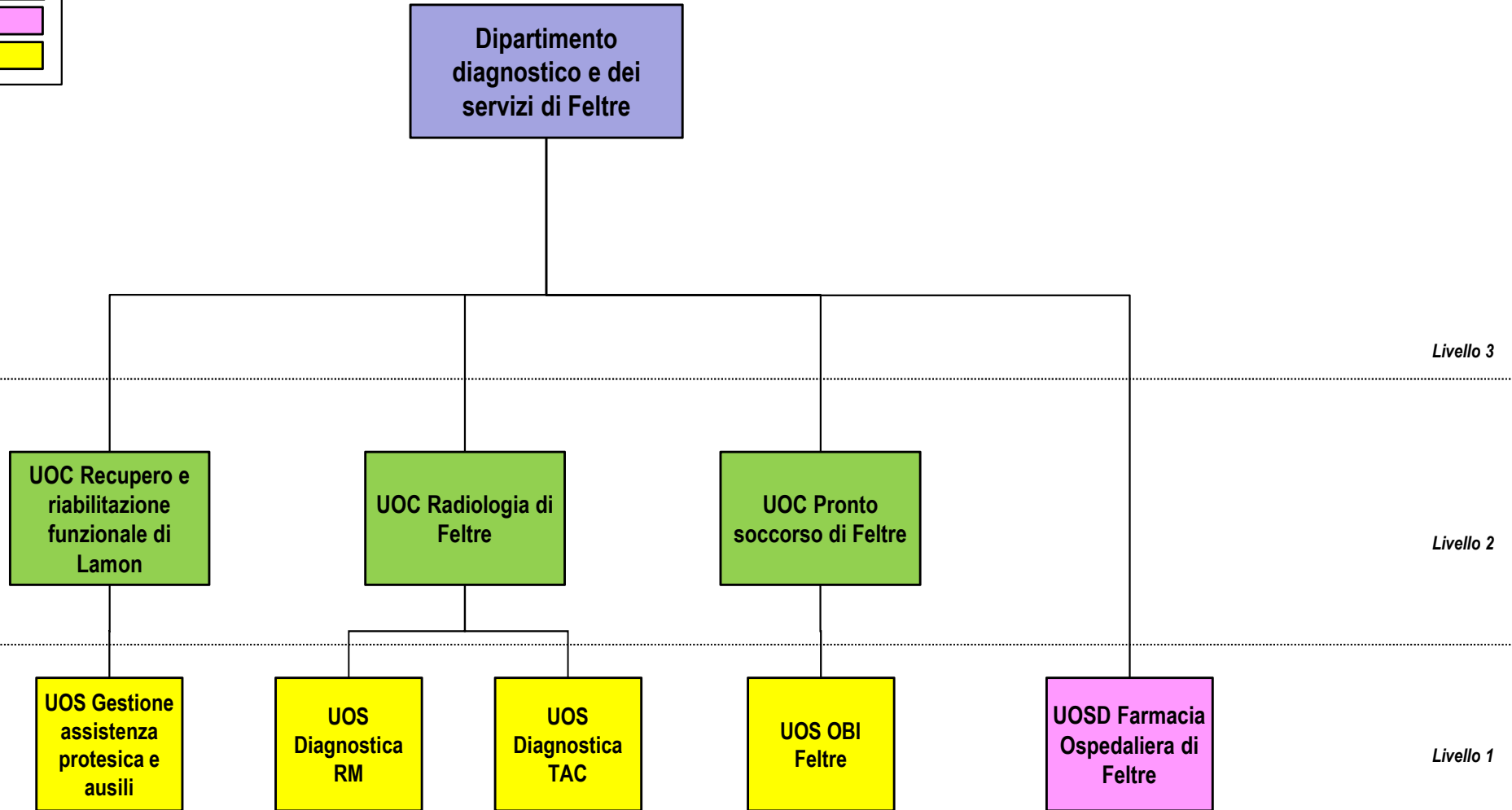
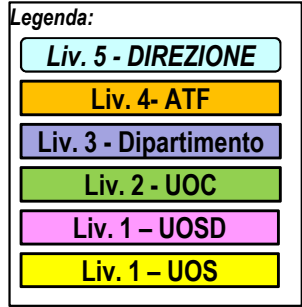
Dipartimenti strutturali Ospedale di Feltre



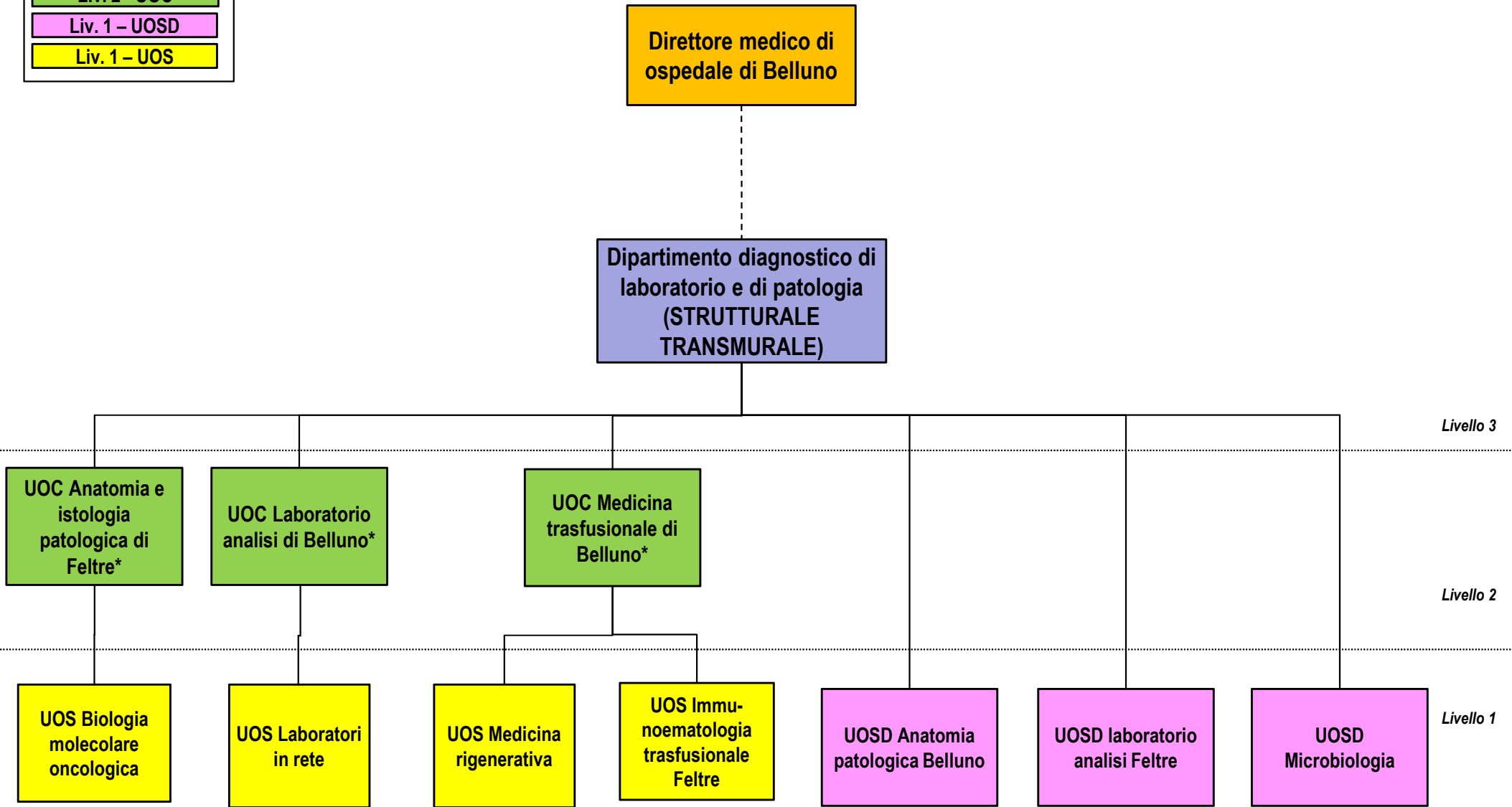
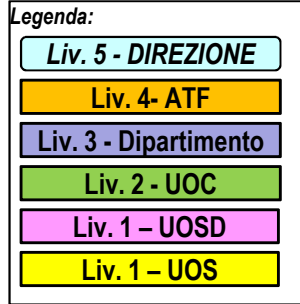


Dipartimento di area chirurgica di Feltre





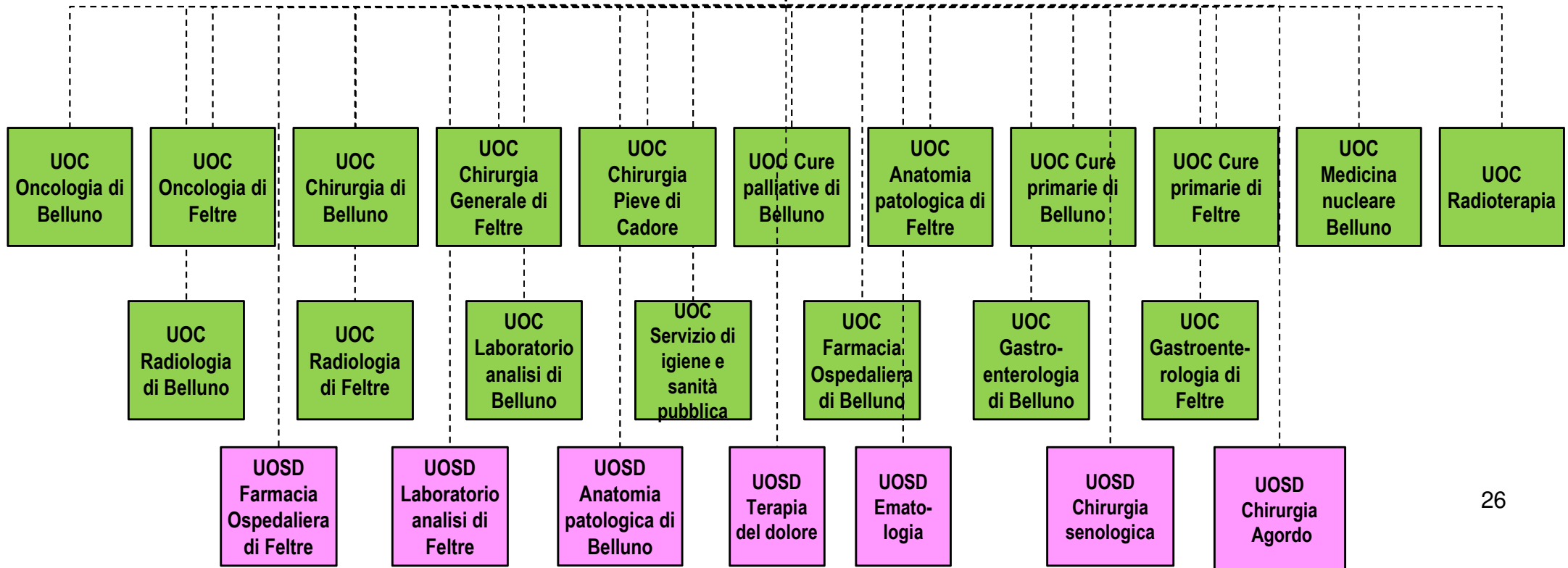
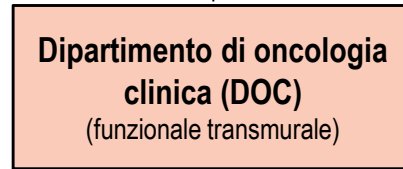
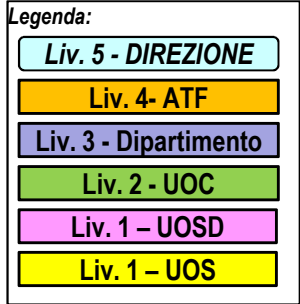
Dipartimenti strutturali transmurali

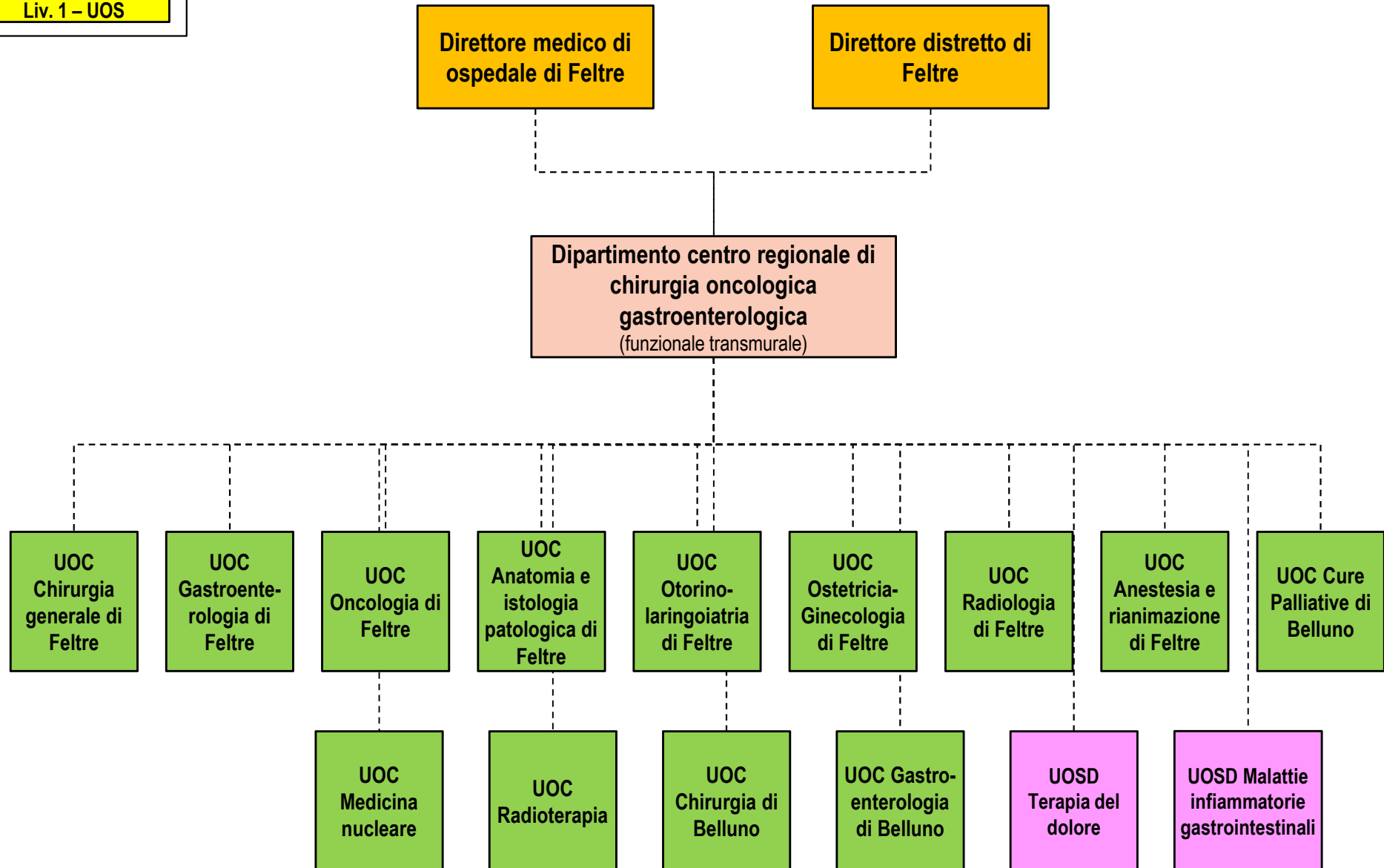
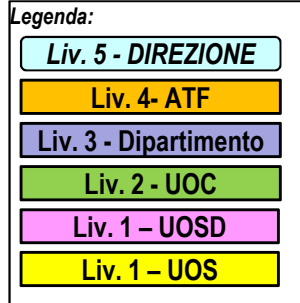


*Con coordinamento intera rete aziendale

Dipartimenti funzionali

- Dipartimento di oncologia clinica (DOC)
- Dipartimento centro regionale di chirurgia oncologica gastroenterologica
- Dipartimento di riabilitazione ospedale-territorio
- Dipartimento materno infantile
- Dipartimento di emergenza e urgenza
- Dipartimento cardiovascolare
- Dipartimento nefro-urologico
- Dipartimento del farmaco
- Dipartimento amministrativo
- Dipartimento di Sanità pubblica, veterinaria e sicurezza alimentare
- Dipartimento di malattie infettive
- Dipartimento regionale del Servizio Urgenza Emergenza Medica delle Aziende ULSS n. 1, 2, 3, 5 e 8 e delle Aziende Ospedaliere di Padova e Verona





Legenda:

Liv. 5 - DIREZIONE

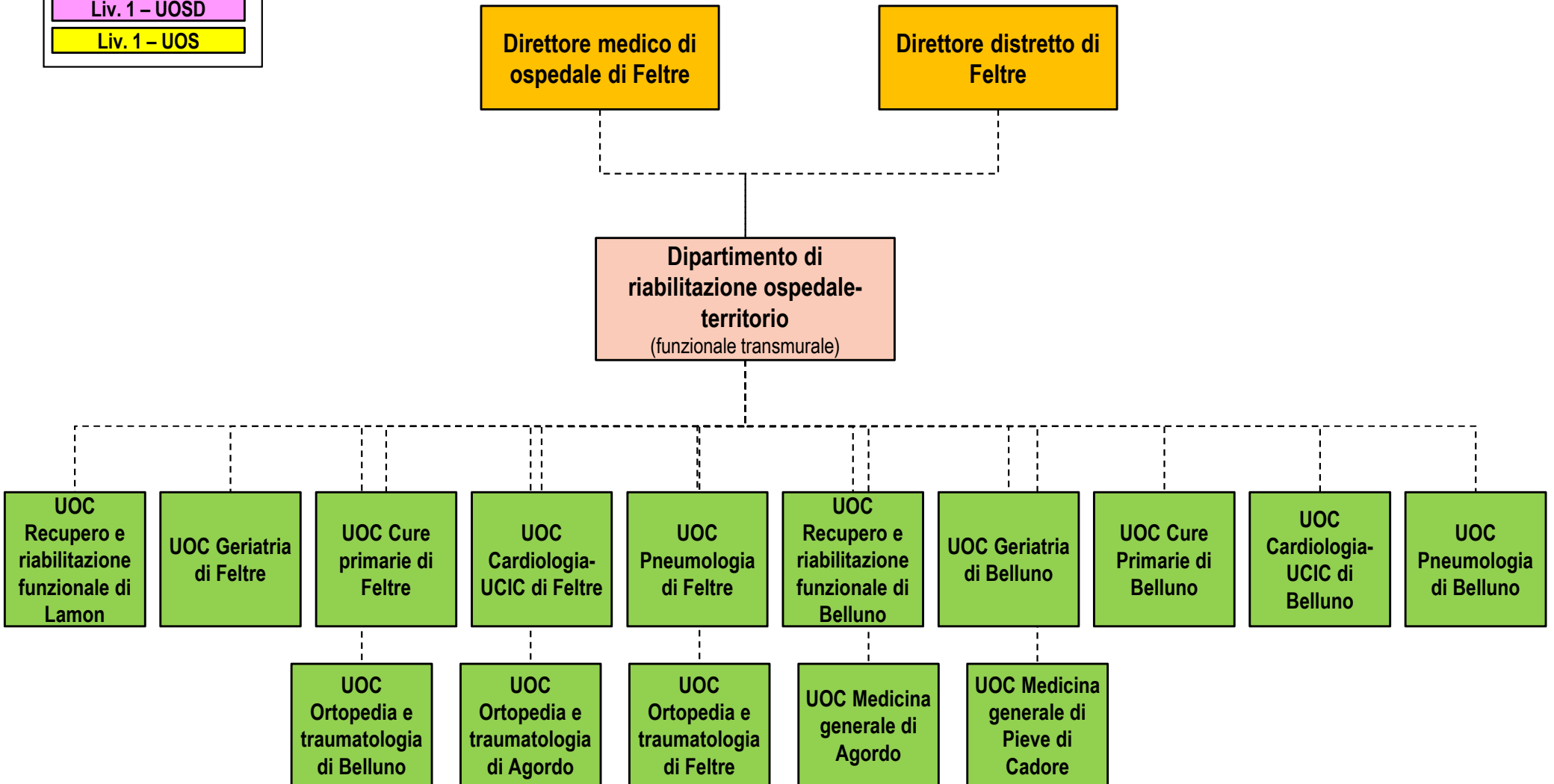
Liv. 4- ATF

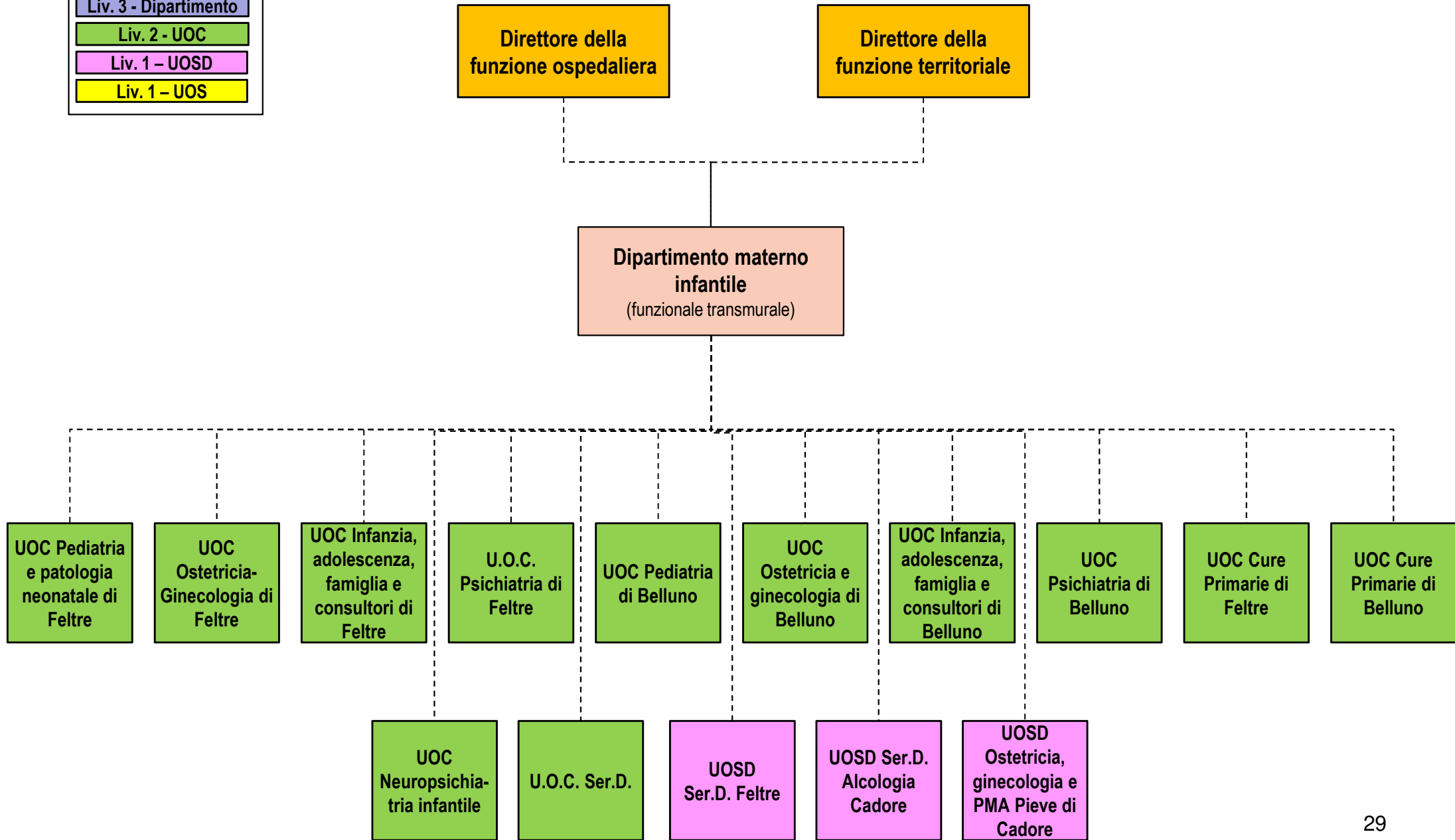
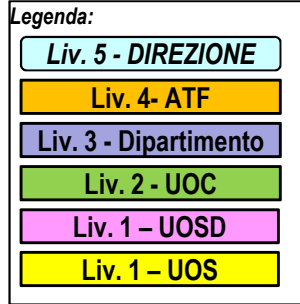
Liv. 3 - Dipartimento

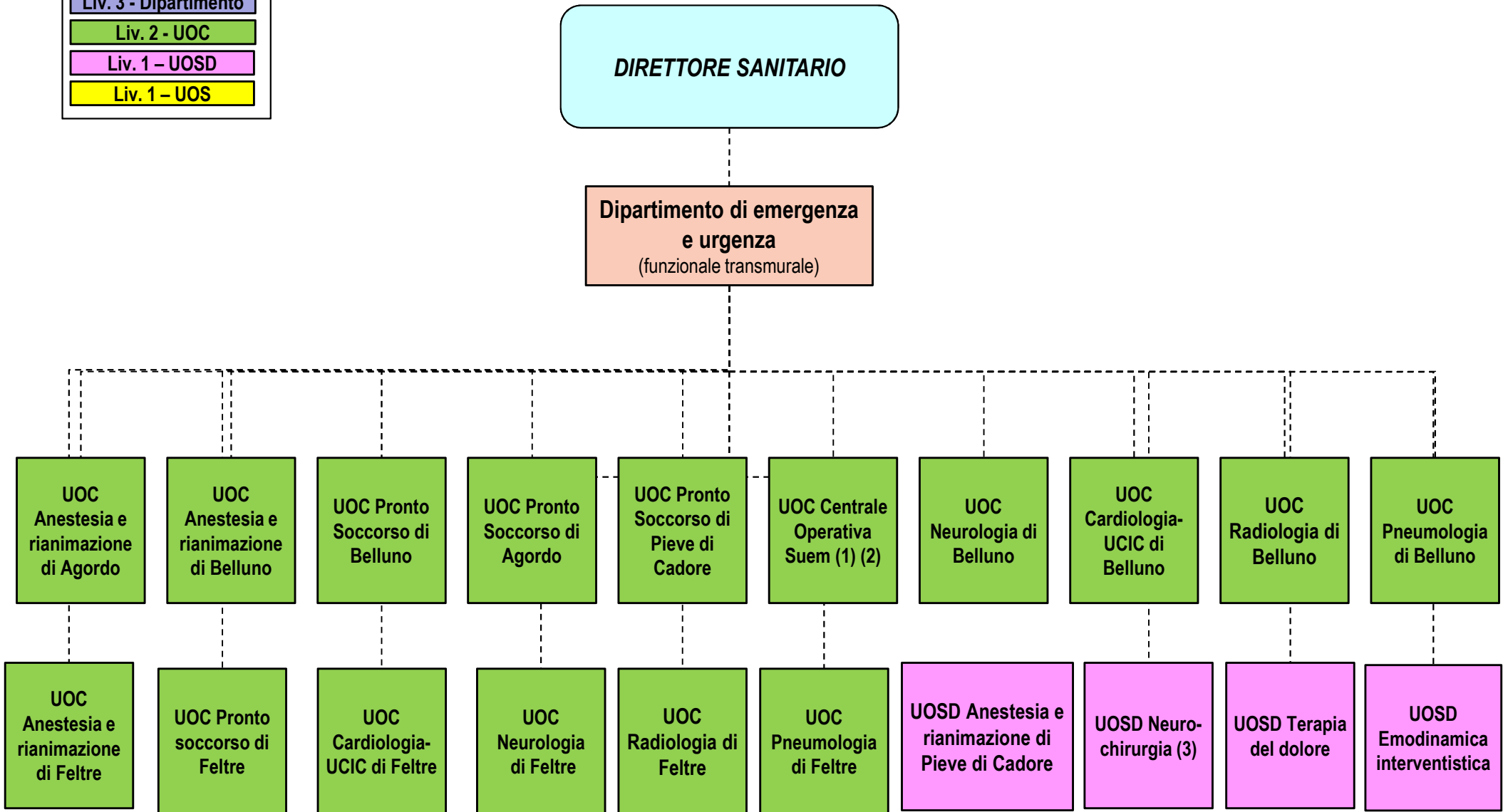
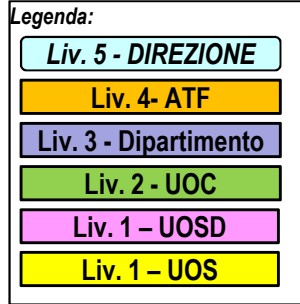
Liv. 2 - UOC

Liv. 1 - UOSD

Liv. 1 - UOS







(1) Coordinamento e gestione PPI Auronzo

(2) Coordinamento PS Cortina a seguito di concessione dell'ospedale di Cortina

(3) In collegamento funzionale con Treviso

Legenda:

Liv. 5 - DIREZIONE

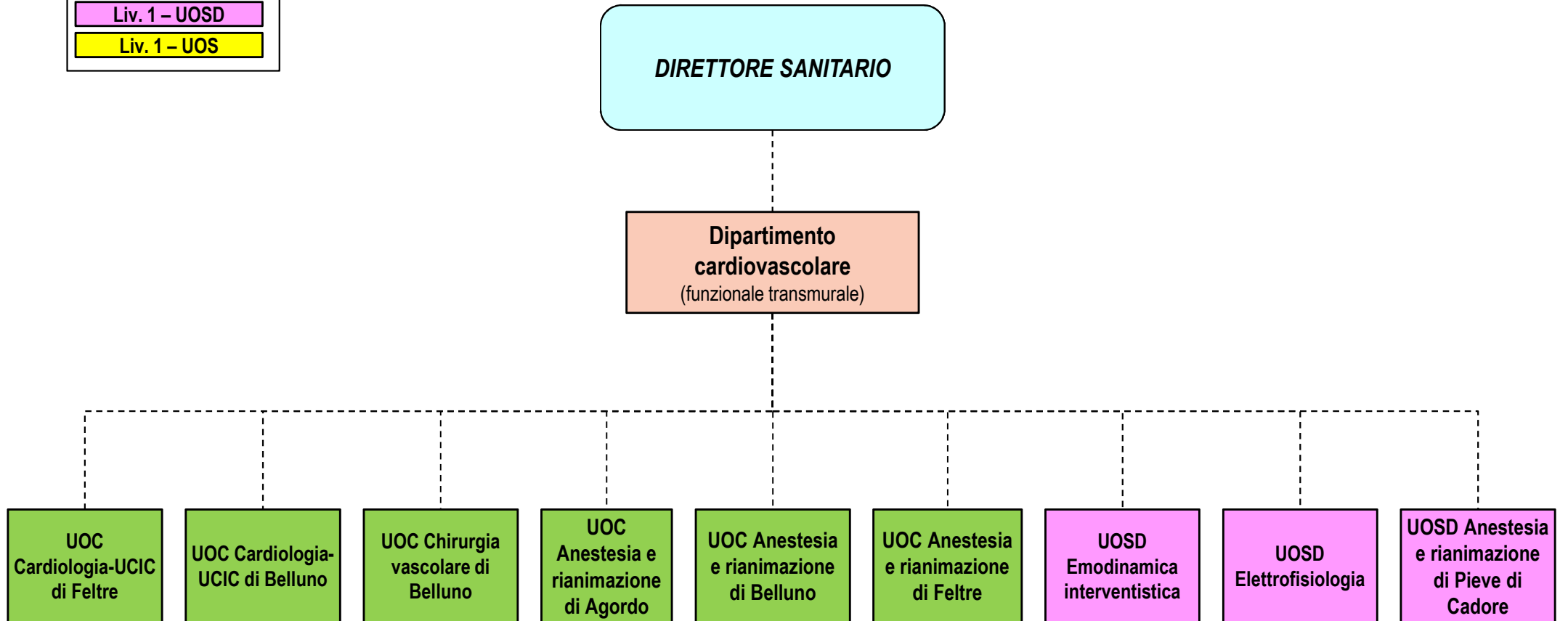
Liv. 4- ATF

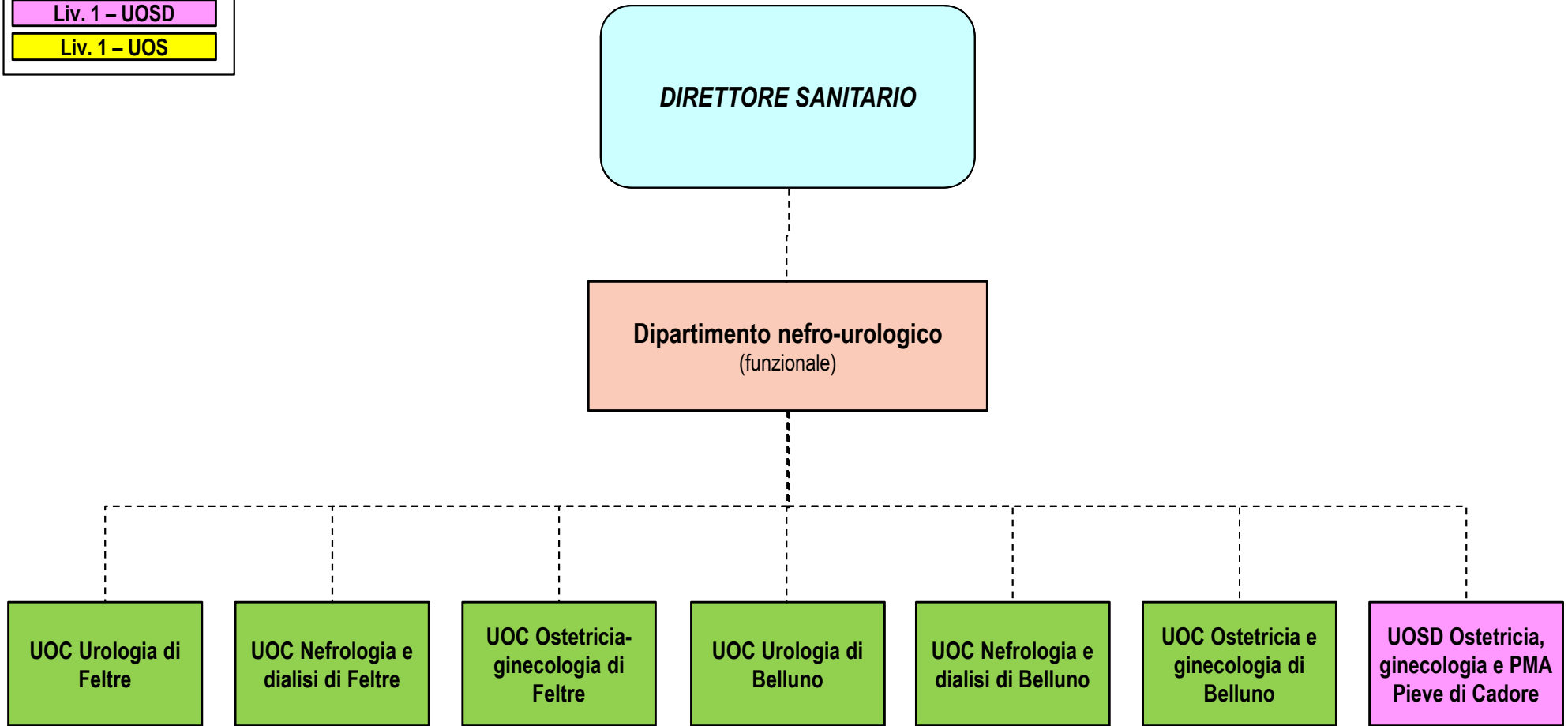
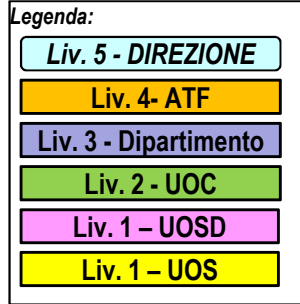
Liv. 3 - Dipartimento

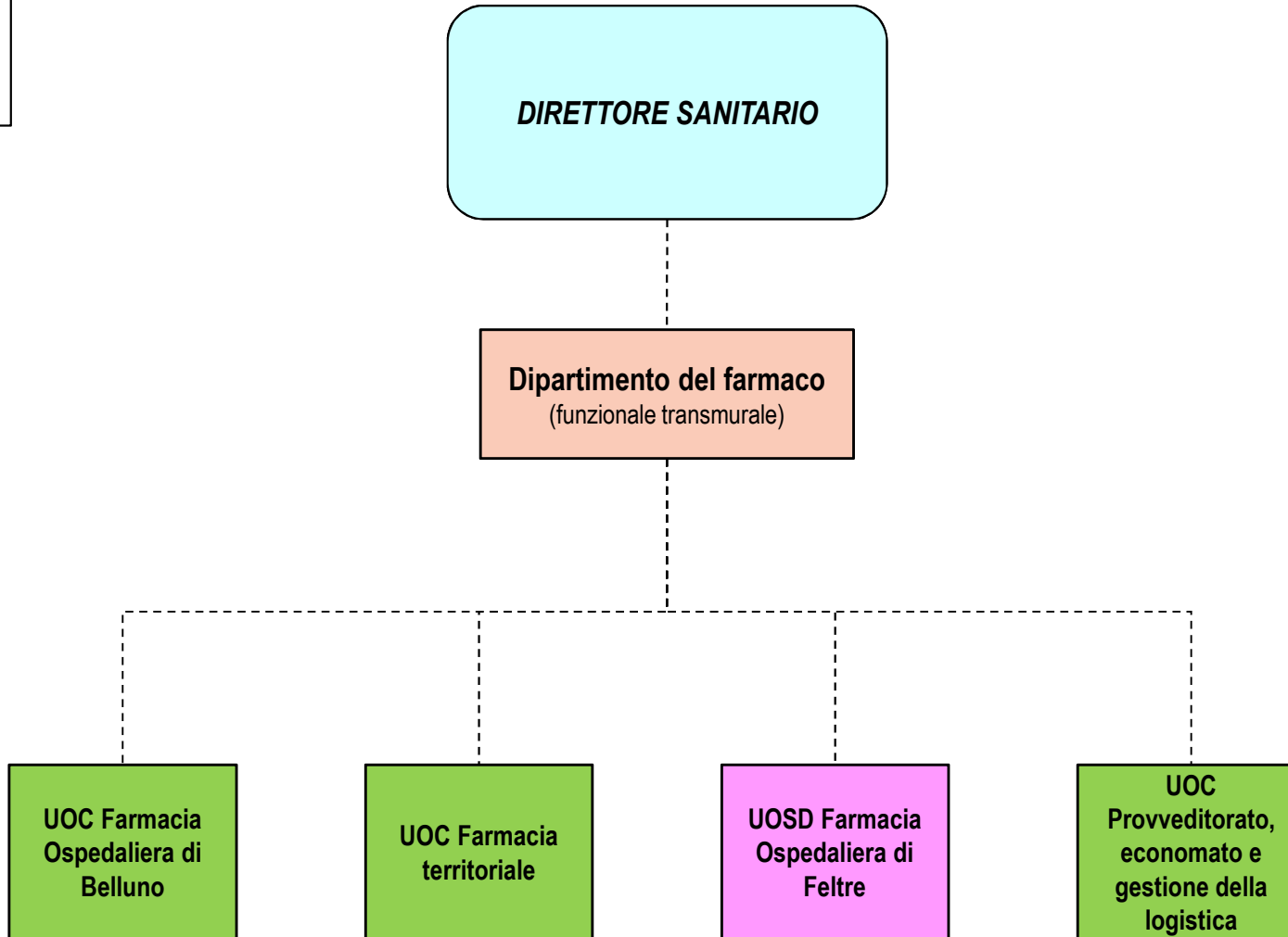
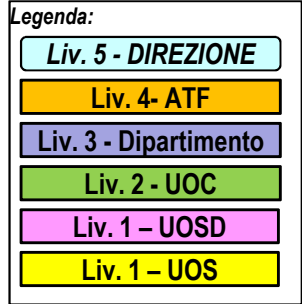
Liv. 2 - UOC

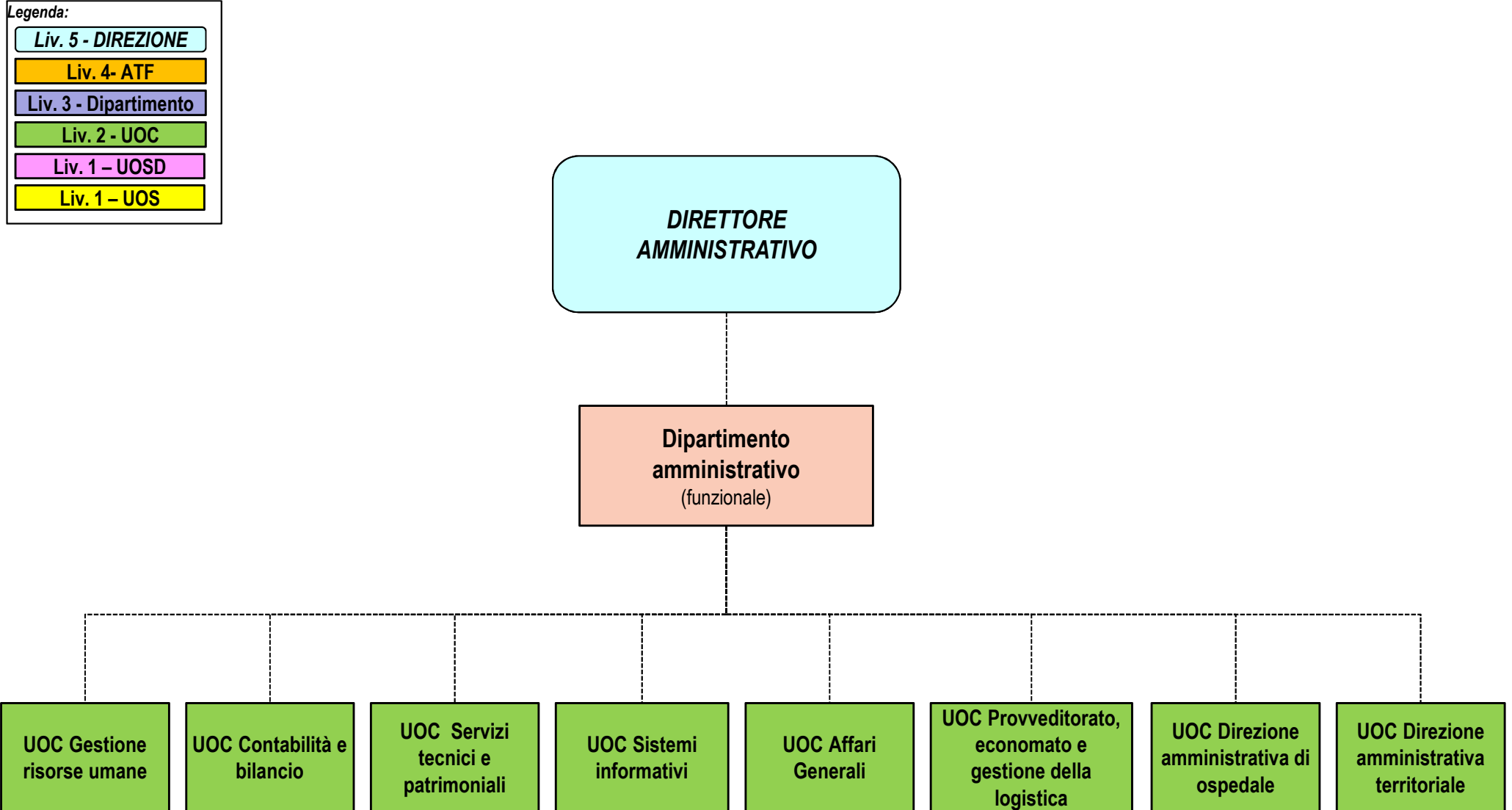
Liv. 1 - UOSD

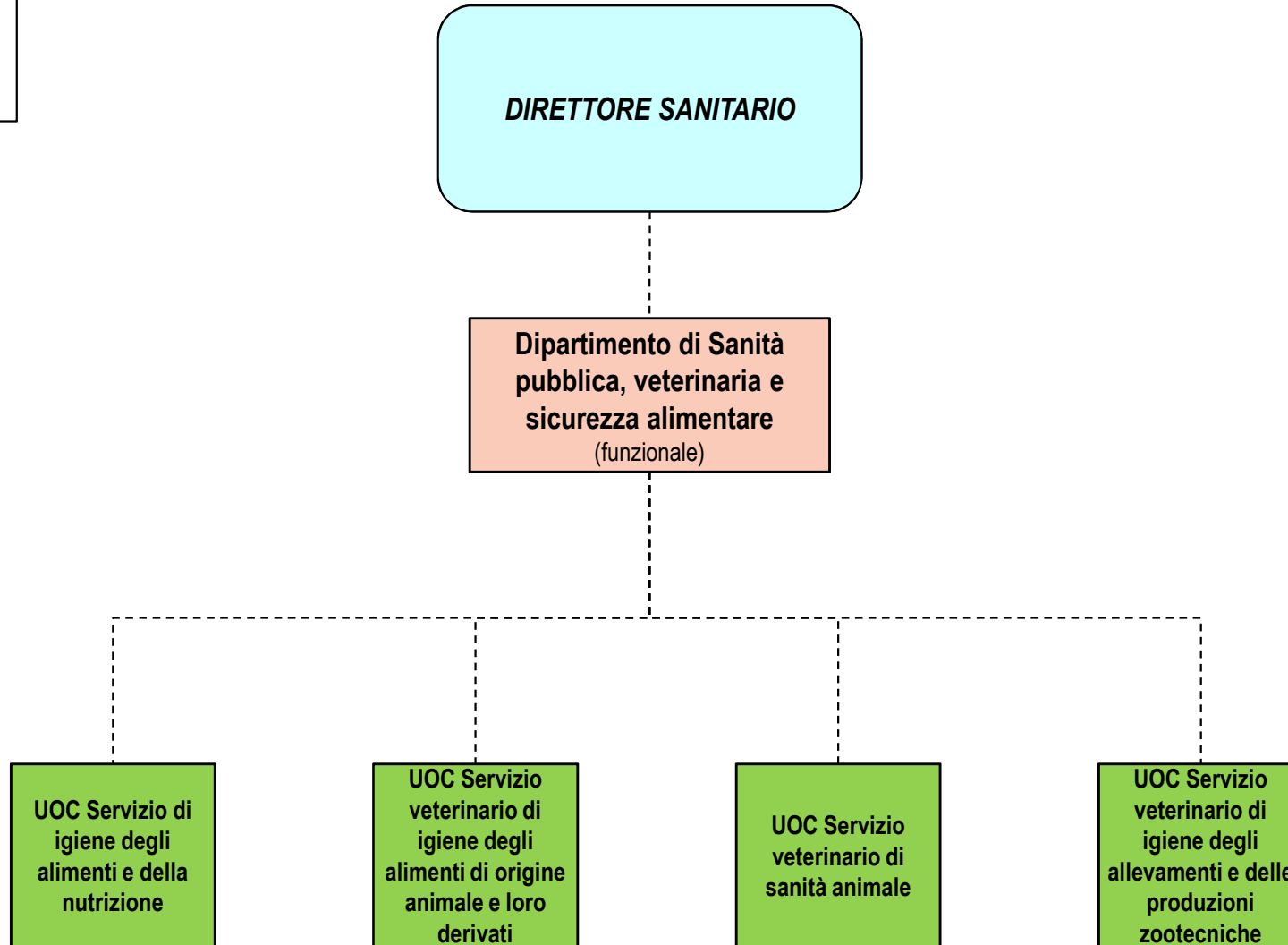
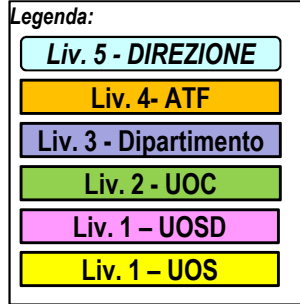
Liv. 1 - UOS

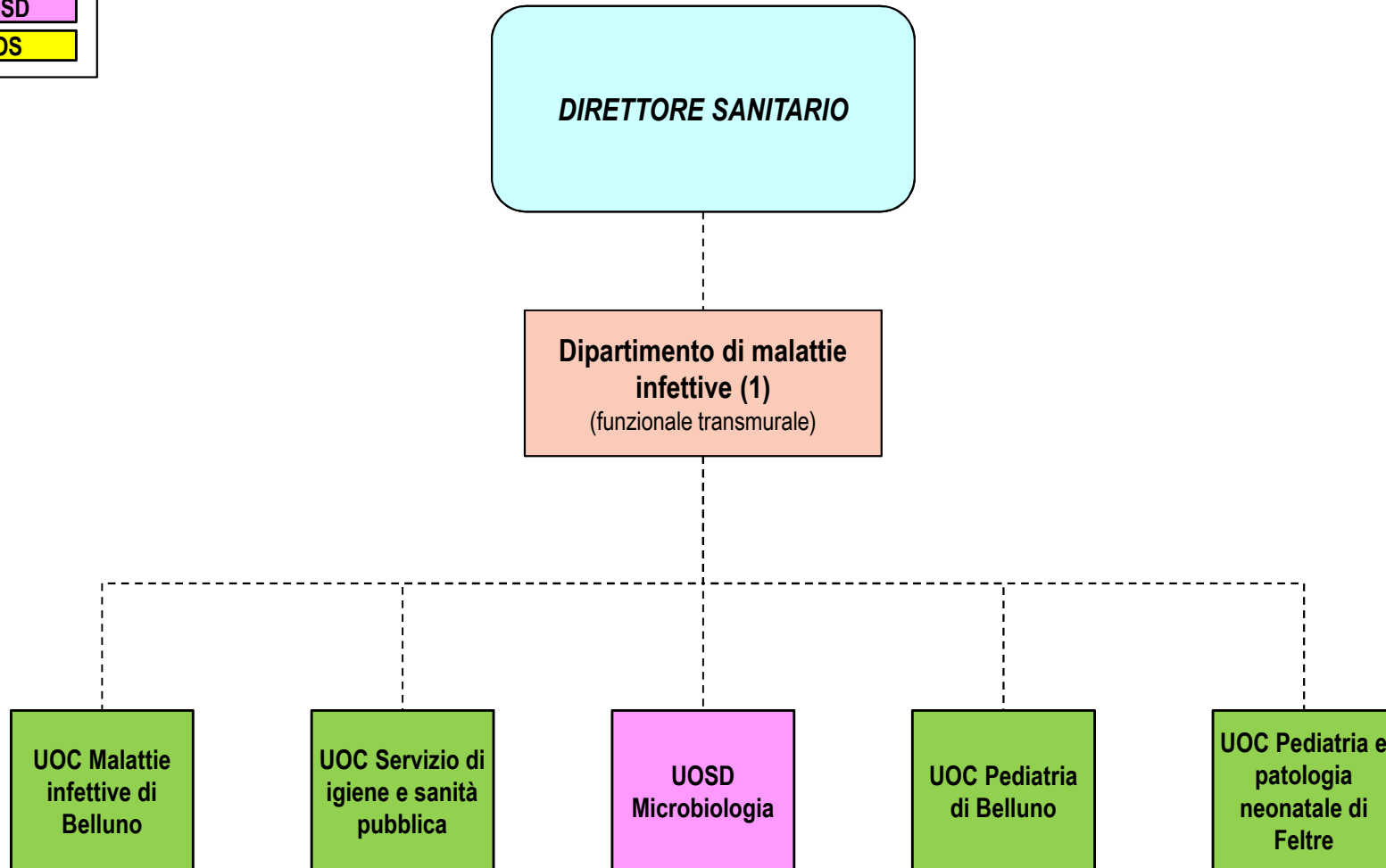
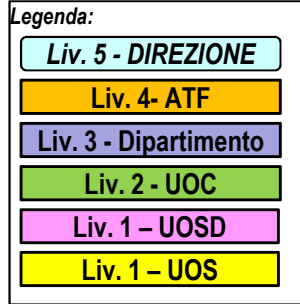




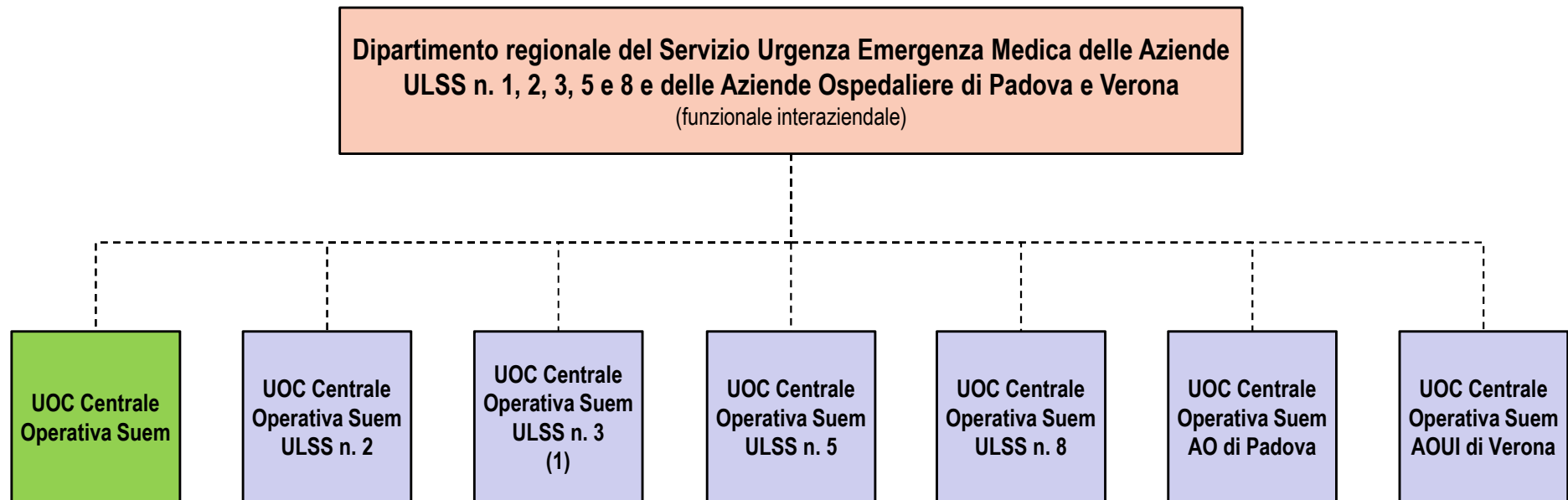
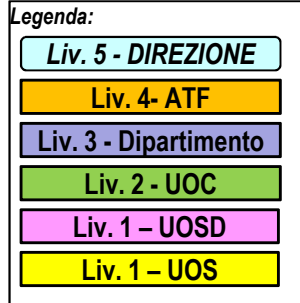








(1) Il Dipartimento è coordinato dal direttore dell'UOC Malattie infettive



(1) Il Dipartimento è coordinato dall'Azienda ULSS n. 3.